

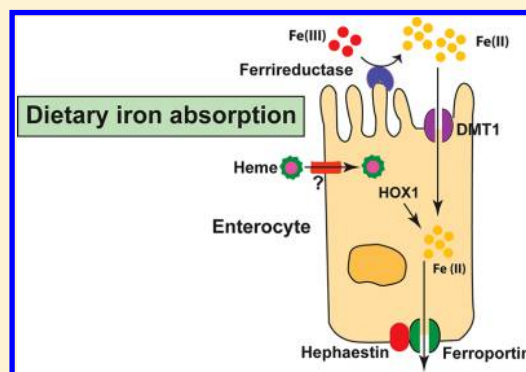
Mechanisms of Mammalian Iron Homeostasis

Kostas Pantopoulos,[†] Suheel Kumar Porwal,[‡] Alan Tartakoff,[§] and L. Devireddy^{*‡}

[†]Lady Davis Institute for Medical Research, Jewish General Hospital and Department of Medicine, McGill University, Montreal, QC, Canada

[‡]Case Comprehensive Cancer Center and [§]Department of Pathology, Case Western Reserve University, Cleveland, Ohio 44106, United States

ABSTRACT: Iron is vital for almost all organisms because of its ability to donate and accept electrons with relative ease. It serves as a cofactor for many proteins and enzymes necessary for oxygen and energy metabolism, as well as for several other essential processes. Mammalian cells utilize multiple mechanisms to acquire iron. Disruption of iron homeostasis is associated with various human diseases: iron deficiency resulting from defects in the acquisition or distribution of the metal causes anemia, whereas iron surfeit resulting from excessive iron absorption or defective utilization causes abnormal tissue iron deposition, leading to oxidative damage. Mammals utilize distinct mechanisms to regulate iron homeostasis at the systemic and cellular levels. These involve the hormone hepcidin and iron regulatory proteins, which collectively ensure iron balance. This review outlines recent advances in iron regulatory pathways as well as in mechanisms underlying intracellular iron trafficking, an important but less studied area of mammalian iron homeostasis.



■ IMPORTANCE OF IRON IN MAMMALIAN PHYSIOLOGY

Iron is a *d*-block transition metal, and like many such metals, it can assume several oxidation states. The most common species are the divalent ferrous (Fe^{2+}) and the trivalent ferric (Fe^{3+}) iron. The redox potential of iron can be greatly modulated by the nature of attached ligands. This has significant physiological ramifications because other oxidation states, such as ferryl (Fe^{4+}), can be transiently generated as key intermediates during metal-mediated oxidative transformations. Other transition elements such as copper and manganese are likewise capable of participating in biological redox reactions.¹ Nevertheless, during evolution, organisms likely selected iron for the following reasons: (1) Iron is the second most abundant metal on earth's crust, falling closely behind aluminum. (2) Iron can exist in multiple oxidation states, which is essential for electron transfer, and for binding to biological ligands. (3) Iron's redox potential ranges from 1000 to -550 mV, depending on the ligand environment, whereas the range for other transition elements is narrower. (4) By exploiting the oxidation states, electron spin state, and redox potential, biological systems can adjust the chemical reactivity of iron to suit physiological needs.^{1,2}

The indispensability of iron for living organisms is exemplified by the fact that it serves as a cofactor for several hemoproteins and non-heme iron-containing proteins, including many enzymes. Hemoproteins are involved in numerous biological functions such as oxygen binding and transport (hemoglobins), oxygen metabolism (catalases and peroxidases), and cellular respiration and electron transport (cytochromes). Proteins containing non-heme iron are important for fundamental cellular processes such as DNA synthesis, cell proliferation

and differentiation (ribonucleotide reductase), gene regulation, drug metabolism, and steroid synthesis. Early in evolution, before oxygen emerged as an abundant constituent of the atmosphere, anaerobic cells acquired soluble ferrous iron with relative ease.³ Later, the accumulation of oxygen oxidized ferrous to ferric iron, which is virtually insoluble at physiological pH. Moreover, the redox cycling of ferrous and ferric iron in the presence of H_2O_2 and $\text{O}_2^{\bullet-}$, which are physiologically produced during aerobic respiration and enzymatic reactions, yields hydroxyl radicals (Fenton chemistry). These in turn readily attack and damage cellular macromolecules. Thus, despite its abundance, the acquisition and transport of iron pose a challenge for cells and organisms because of its low solubility and high toxicity. To overcome these problems, unicellular organisms such as bacteria synthesize "siderophores", which are low-molecular weight, iron-specific chelating agents that capture extracellular iron and transfer it into the cell.^{4,5} In contrast, mammalian cells acquire iron from extracellular carrier proteins.^{6,7}

■ SYSTEMIC IRON METABOLISM

Distribution of Iron in the Body. The human body contains ~ 3 – 5 g of iron.⁶ Most of it is present as heme in hemoglobin of erythroid cells (>2 g) or myoglobin of muscles (~ 300 mg). Macrophages in the spleen, liver, and bone marrow maintain a transient fraction of iron (~ 600 mg), while excess iron is stored in the liver parenchyma within ferritin (~ 1000 mg). All other cellular iron-containing proteins and

Received: March 12, 2012

Published: June 15, 2012

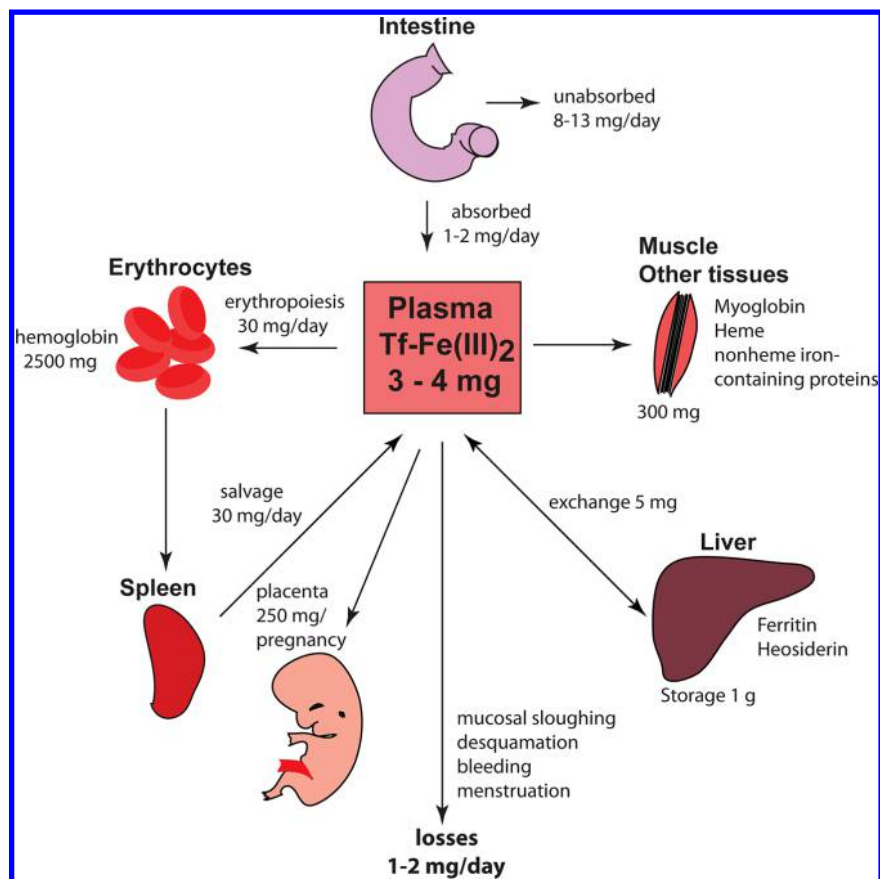


Figure 1. Iron absorption, distribution, and recycling in the body and quantitative exchange of iron between body iron sources. Body iron levels are maintained by daily absorption of $\sim 1\text{--}2$ mg of dietary iron to account for obligatory losses of a similar amount of iron through sloughing of mucosal and skin cells, hemorrhage, and other losses. Approximately 4 mg of iron is found in circulation bound to Tf, which accounts for 0.1% of the total body iron. A majority of the body iron is found in the erythroid compartment of bone marrow and in mature erythrocytes contained within the heme moiety of hemoglobin. Splenic reticuloendothelial macrophages, which recycle iron from senescent red blood cells, provide iron for the synthesis of new red blood cells. Tf delivers iron to developing erythroid precursors, as well as to other sites of iron utilization. Liver hepatocytes store iron in ferritin shells. During pregnancy, 250 mg of iron is transported across the placenta to the fetus. The distribution of iron in the body is altered in iron deficiency and iron overload (see the text).

enzymes are estimated to bind a total of ~ 8 mg of iron (ref 7 and Figure 1).

Iron is delivered to erythroblasts and to most tissues via circulating transferrin (Tf), which carries ~ 3 mg of the metal at steady state. Considering that Tf-bound iron turns over >10 times a day, it represents the most dynamic body iron pool. Plasma iron is predominantly replenished by reticuloendothelial macrophages, and to a small extent ($\sim 1\text{--}2$ mg/day) by absorption from the diet, mediated by duodenal enterocytes. The macrophages acquire iron primarily via erythrophagocytosis and the enterocytes by internalization of heme or inorganic iron from the intestinal lumen.⁸

The absorption of inorganic iron involves reduction of Fe^{3+} to Fe^{2+} by ascorbate and/or membrane-associated ferrireductases such as duodenal cytochrome *b* (Dcyt b^9), coupled to transport of Fe^{2+} across the apical membrane by divalent metal transporter 1 (DMT1/SLC11A2), solute carrier family 11 member 2, also known as natural resistance-associated macrophage protein 2 (NRAMP2), or divalent cation transporter (DCT1).^{6,7} The mechanism of heme internalization remains poorly defined and may involve either direct transport of heme or receptor-mediated endocytosis.¹⁰ Macrophages and enterocytes catabolize heme in a reaction catalyzed by heme oxygenase-1 and -2 (HO-1 and HO-2, respectively), which liberate inorganic iron.¹¹

Both cell types export Fe^{2+} to plasma via the transmembrane transporter, ferroportin/SLC40A1,^{6,7} in a process coupled to the reoxidation of Fe^{2+} to Fe^{3+} . This is mediated by the circulating ferroxidase ceruloplasmin or its homologue, hephaestin, which is expressed on the basolateral membrane of duodenal enterocytes and physically interacts with ferroportin.^{6,7}

Exported iron is scavenged by plasma Tf, which maintains it in a redox inert state and delivers it to tissues. The loading of apo-Tf with iron may be facilitated by gastrins. These peptide hormones stimulate the secretion of gastric acid and have also been proposed to act as transient Fe^{3+} chaperones.¹² Tf contains two ferric binding sites and is only partially (30%) saturated with iron under physiological conditions. The concentration of diferric Tf in plasma is ~ 5 $\mu\text{mol/L}$, corresponding to approximately one-tenth of the total circulating Tf.¹³ The high abundance of unsaturated apo-Tf allows an efficient buffering of increased plasma iron levels and prevents the buildup of non-transferrin-bound iron (NTBI), which is taken up by tissue parenchymal cells and promotes oxidative injury.¹⁴ NTBI is generated in iron overload states, such as in hereditary hemochromatosis, where transferrin gradually becomes fully saturated with iron and loses its buffering capacity.

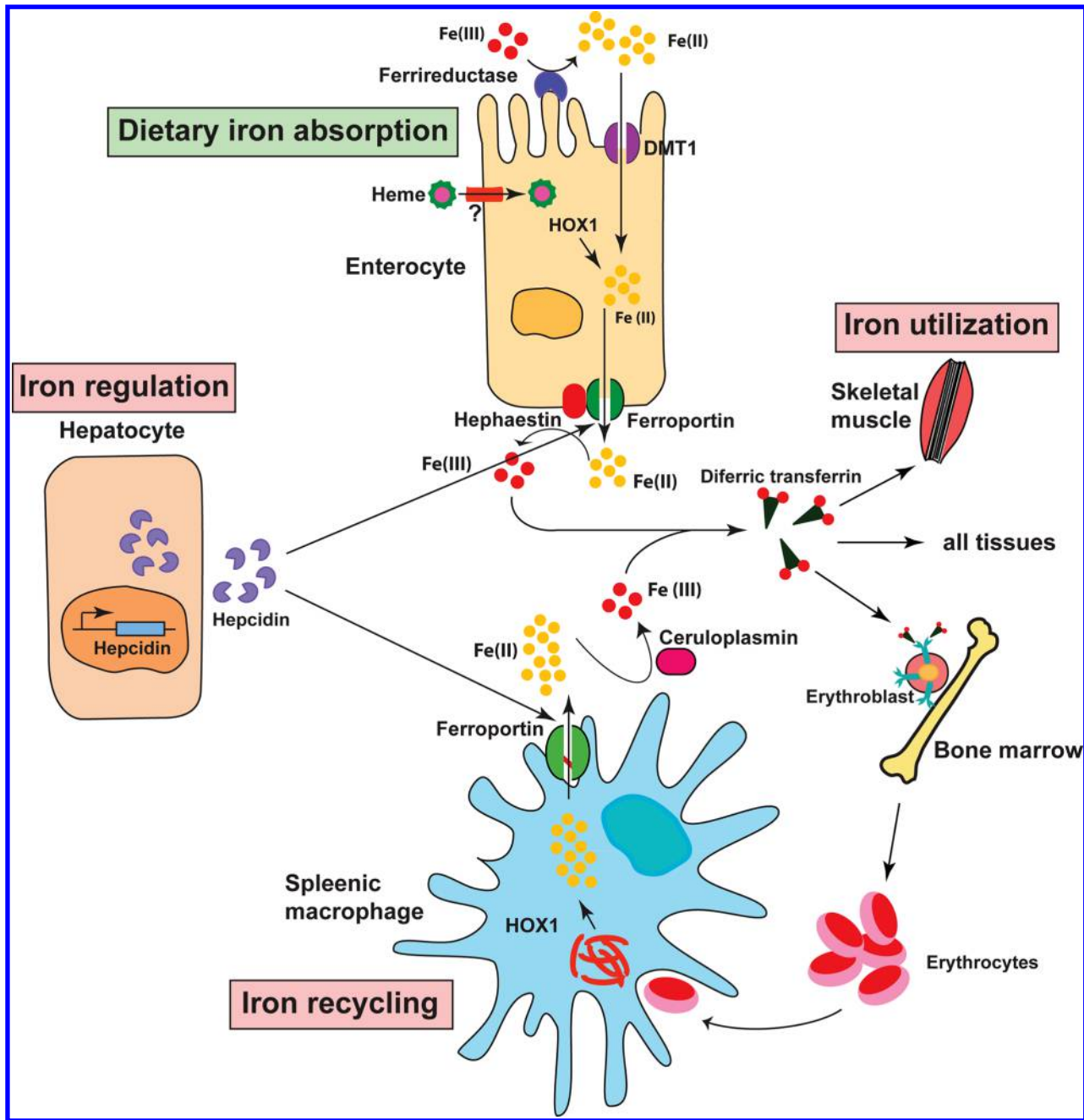


Figure 2. Regulation of systemic iron metabolism. Organs and cell types involved in systemic iron balance are shown. Duodenal enterocytes absorb dietary iron via DMT1 located on the apical surface upon reduction of Fe³⁺ to Fe²⁺ by DcytB. Splenic reticuloendothelial macrophages recycle iron from senescent red blood cells. Both cell types release iron via ferroportin with the aid of hephaestin, which oxidizes Fe²⁺ to Fe³⁺. Iron is also oxidized by ceruloplasmin in the circulation. Plasma Tf captures and circulates iron in the body. Hepatic hormone hepcidin regulates the efflux of iron from these cells by regulating the stability of ferroportin. The synthesis and secretion of hepcidin by hepatocytes are influenced by iron levels in the body as well as conditions that affect iron metabolism indirectly such as inflammation, ER stress, erythropoiesis, and hypoxia (see the text for additional details).

Regulation of Body Iron Metabolism. Hormonal Regulation by Hepcidin. The trafficking of iron into plasma is largely controlled by the iron regulatory hormone hepcidin, which was first purified from plasma¹⁵ and urine¹⁶ on the basis of its antimicrobial activity. This liver-derived peptide binds to ferroportin on the plasma membrane of enterocytes, macrophages, hepatocytes, and other cells, promoting its Jak-dependent phosphorylation and internalization that leads to its lysosomal degradation.^{17,18} Ferroportin is the only exporter of inorganic iron in mammalian cells. Therefore, inactivation of

ferroportin causes intracellular iron retention.^{19,20} Hepcidin has also been shown to promote proteasomal degradation of DMT1.¹⁹ Pathological overexpression of hepcidin under prolonged inflammatory conditions is associated with the anemia of chronic disease, which is characterized by diversion of iron to storage sites, hypoferrremia and reduced iron availability for erythropoiesis (ref 20 and Figure 2). Even more severe iron redistribution occurs in patients with hereditary iron-refractory iron deficiency anemia (IRIDA), a disease caused by genetic disruption of the *TMPRSS6* gene encoding the

transmembrane serine protease matriptase-2 that negatively regulates hepcidin expression.²¹

Conversely, hepcidin deficiency, or in rare cases ferroportin resistance to hepcidin, is a hallmark of hemochromatosis, which is associated with uncontrolled dietary iron absorption and progressive tissue iron overload.^{22,23} Patients with uncommon nonsense mutations in the *HAMP*²⁴ or *high iron gene 2* (*HFE2*)²⁵ genes, encoding hepcidin or its upstream activator *heмоjuvelin* (*HJV*), respectively, develop early onset juvenile hemochromatosis (JH). The most frequent type of hemochromatosis is associated with mutations in the *HFE* gene,²⁶ which leads to milder hepcidin insufficiency.²⁷ Other types of hemochromatosis are caused by inactivation of the *TFR2* gene encoding transferrin receptor 2 (*TfR2*)²⁸ or by specific mutations in the *SLC40A1* gene encoding ferroportin that prevent the binding of hepcidin.^{29,30} The former is associated with inappropriately low levels of hepcidin expression and the latter with hepcidin resistance.^{29,30}

Hepcidin is generated in hepatocytes and other cell types, as a precursor propeptide of 84 amino acids.³¹ Following cleavage by the prohormone convertase furin,³² a biologically active mature 25-mer is secreted to plasma where it is thought to interact with α 2-macroglobulin.³³ The expression of hepcidin is regulated at the transcriptional level. *C/EBP α* (CCAAT enhancer-binding protein α) binds to a CCAAT motif within the *HAMP* promoter and maintains basal transcriptional activity.³⁴ *Alk3*, a type I bone morphogenetic protein (BMP) receptor, also appears to be critical for basal hepcidin expression.³⁵ Hepcidin transcription is induced by iron, inflammation, or ER stress and is inhibited by iron deficiency, increased erythropoietic drive, or hypoxia (reviewed in ref 22).

The responsiveness of the expression of hepcidin to iron was established during its initial discovery as an iron-induced peptide.²² Subsequently, the oral administration of iron was found to increase the level of hepcidin mRNA in humans and mice.²² Nevertheless, hemochromatosis patients exhibit impaired hepcidin responses to iron ingestion,^{36,37} associated with low levels of hepcidin expression, which are disproportional to their iron load.^{27,38} Likewise, mouse models of hemochromatosis demonstrate hepcidin insufficiency.^{39–41} There is evidence that hepatic iron and circulating iron induce hepcidin expression by distinct pathways.^{42,43}

Regulation of Hepcidin by Hepatic Iron. An increase in hepatic iron levels activates hepcidin transcription via the BMP signaling pathway.⁴⁴ The binding of BMP6 and other BMP ligands to type I (*Alk2* and *Alk3*) and type II BMP receptors promotes the phosphorylation of SMAD1, SMAD5, and SMAD8 proteins.³⁵ The phosphorylated SMAD1–SMAD5–SMAD8 complex recruits SMAD4 and translocates to the nucleus, where it stimulates hepcidin transcription upon binding to BMP responsive elements (BMP-RE1 and BMP-RE2) at proximal and distal sites of the *HAMP* promoter.⁴⁵ The liver-specific disruption of *Alk2*, *Alk3*,³⁵ or *SMAD4*⁴⁶ in mice inhibits iron-induced hepcidin expression and leads to iron overload.²² Induction of inhibitory SMAD7, another target of BMP signaling, antagonizes the interaction of the phosphorylated SMAD1–SMAD5–SMAD8 with SMAD4 and reduces the level of transcription of hepcidin in a feedback regulatory loop.⁴⁷

The expression of *BMP6* is induced by hepatic iron, and its mRNA levels reflect the hepatic iron load.⁴² Liver-specific *Bmp6*^{-/-} mice develop iron overload and fail to upregulate hepcidin.^{48,49} Other endogenous BMPs do not appear to be

capable of rescuing this phenotype, despite the capacity of BMP2, -5, -7, and -9 to activate hepcidin expression in cell culture experiments.^{44,46,50} Mice treated with recombinant BMP6 manifest increased levels of hepcidin expression and hypoferremia.⁴⁹ Conversely, a neutralizing BMP6 antibody⁴⁹ or the BMP inhibitor dorsomorphin⁵¹ can reduce the level of hepcidin expression and trigger an increase in serum iron levels. These data highlight a function of BMP6 as the principal upstream regulator of hepcidin.

Hjv is a BMP coreceptor that plays an essential role in iron-induced activation of hepcidin by forming complexes with type I and II BMP receptors, which enhances downstream signaling.⁴⁴ It is primarily expressed in hepatocytes and skeletal muscle cells and associates with the plasma membrane via a C-terminal glycosylphosphatidylinositol (GPI) anchor. Soluble forms of *Hjv* have been detected in plasma,⁵² while recombinant soluble *Hjv* competes with BMP signaling to hepcidin in vitro and in vivo.^{50,52} Nevertheless, plasma *Hjv* seems unlikely to be of physiological importance for hepcidin regulation. Thus, mice with liver-specific disruption of *Hjv* develop defects in hepcidin expression and iron overload quantitatively similar to those of full *Hjv*^{-/-} counterparts, while muscle-specific *Hjv*^{-/-} animals exhibit normal iron homeostasis^{53,54} (also see Table 1). These findings underline the role of hepatic *Hjv* as a major regulator of hepcidin.

Biochemical data suggest that matriptase-2 negatively regulates hepcidin by proteolytic inactivation of *Hjv*.⁵⁵ Nevertheless, *Tmprss6*^{-/-} mice, a model of IRIDA with high levels of hepcidin expression^{56,57} (Table 1), were reported to have lower hepatic *Hjv* content than wild-type animals.⁵⁸ Matriptase-2 expression is induced by iron and BMP6,⁵⁹ consistent with this protein functioning as a negative feedback regulator of hepcidin.

Regulation of Hepcidin by Plasma Iron. An increase in plasma iron levels activates the expression of hepcidin by an incompletely characterized pathway that likely involves hepatic HFE and *TfR2*. Evidence that these proteins are crucial for systemic iron homeostasis is provided by the iron overload that develops as a result of hepcidin suppression in mice with liver-specific disruption of either *Hfe*⁶⁰ or *TfR2*.⁶¹ The role of iron-loaded Tf in this pathway is illustrated by experiments in which injection of holo-Tf into mice caused a specific increase in the level of *hepcidin* mRNA within hours.⁴² Moreover, acute administration of iron to mice enhanced Tf saturation and activated hepcidin expression without altering hepatic BMP6 levels.⁴³

Hemochromatosis patients carrying *HFE* or *TFR2* mutations exhibit relatively higher levels of basal hepcidin expression than healthy subjects, yet this increase is only modest by comparison to their iron burden and does not prevent iron overload.^{37,62} This suggests an at least partial preservation of hepcidin regulation by hepatic iron. Oral iron administration triggers a parallel increase in the levels of Tf saturation and hepcidin in healthy subjects, but a blunted hepcidin response in hemochromatosis patients, uncoupled from the increase in the level of Tf saturation.^{37,63} Likewise, *Hfe*^{-/-} and *TfR2*^{Y245X/Y245X} mice mount an impaired hepcidin response to acute dietary iron challenge.⁴²

TfR1, which interacts with HFE,⁶⁴ is also involved in the regulation of hepcidin by holo-Tf. This became evident in studies of mice bearing mutations, which either favor or prevent HFE–*TfR1* interactions. Animals in which HFE–*TfR1* interactions were constitutive developed iron overload and

Table 1. Regulators of Systemic Iron Metabolism in Animal Models and Human Disorders

metabolic process	protein	gene	function	mouse model	phenotype	human disease	refs
iron absorption and recycling	hepcidin (HAMP)	<i>Hamp</i>	regulates intestinal iron absorption by controlling ferroportin sensor for diferric Tf; regulator of hepcidin	<i>Hamp</i> ^{-/-}	iron overload, no hepcidin	juvenile hemochromatosis (HH type 2B)	24
	transferrin receptor 2 (TfR2)	<i>TfR2</i>	regulates hepcidin expression	<i>TfR2</i> ^{-/-}	increased level of iron absorption; iron overload, decreased level of hepcidin	hemochromatosis (HH type 3)	61
	SMAD4	<i>Smad4</i>	regulates hepcidin expression	<i>Smad4</i> ^{-/-}	iron overload; decreased level of hepcidin	colorectal and pancreatic cancer predisposition	44, 50
	bone morphogenic protein 6 (BMP6)	<i>Bmp6</i>	regulates hepcidin expression	<i>Bmp6</i> ^{-/-}	iron overload; decreased level of hepcidin	rare cases of hereditary hemochromatosis	44, 50
	matriptase-2 (TMPRSS6)	<i>Tmprss6</i>	regulates hepcidin expression	<i>Tmprss6</i> ^{msk/msk} <i>Tmprss6</i> ^{-/-}	alopecia, microcytic anemia, infertility	microcytic anemia; low serum levels of iron; increased levels of hepcidin	21, 56, 57
	ferroportin (SLC40A1; MTP1)	<i>Slc40a1</i>	regulates efflux of iron from enterocytes	<i>Slc40a1</i> ^{-/-}	embryonic lethality; conditional deficiency with iron deficiency	hemochromatosis, macrophage iron overload (HH type 4)	214
	hephaestin (HEPH)	<i>Heph</i>	ferroxidase, functions in concert with Fp	<i>Sla Heph</i> ^{-/-}	microcytic anemia, iron deficiency	unknown	213
	ceruloplasmin (CP)	<i>Cp</i>	plasma ferroxidase; closely related to Heph	<i>Cp</i> ^{-/-}	iron overload, anemia, impaired motor coordination	aceruloplasminemia	213
	high iron gene (HFE)	<i>Hfe</i>	regulator of HAMP; interacts with TfR1 and TfR2	<i>HFE</i> ^{-/-}	iron overload, decreased level of hepcidin	HLA-linked hemochromatosis (HH type 1)	7, 26, 61
	hepcidin (HJV)	<i>Hfe2</i>	bone morphogenic protein coreceptor	<i>Hjv</i> ^{-/-}	iron overload, decreased level of hepcidin	juvenile hemochromatosis (HH type 2A)	25, 53, 54
	divalent metal transporter 1 (DMT1 <i>Nramp1</i>)	<i>Slc11a2</i>	transmembrane iron transporter	<i>mk/mk DMT</i> ^{-/-}	hypochromic, microcytic anemia; impaired iron absorption	iron overload in liver; anemia	105, 108, 109

failed to appropriately increase the level of hepcidin expression, similar to *Hfe*^{-/-} mice.⁶⁵ By contrast, animals in which HFE–TfR1 interactions were abolished developed iron deficiency because of hepcidin overexpression, similar to hepatocyte-specific *Hfe* transgenic mice.⁶⁵ These findings suggest that the binding of TfR1 compromises HFE signaling to hepcidin, while the dissociation of TfR1 induces it. Earlier biochemical studies showed that TfR1 utilizes the same binding site for its interaction with both HFE and holo-Tf, while TfR2 interacts with HFE and holo-Tf in a noncompetitive manner.^{66–68} Moreover, TfR1 and TfR2 compete for binding to HFE.⁶⁹ It should also be noted that holo-Tf stabilizes TfR2.^{70,71}

It is therefore thought that HFE and TfR2 form a signaling complex that leads to hepcidin activation. When plasma iron levels are low, signaling to hepcidin is blocked by TfR1, which sequesters HFE and prevents its interaction with TfR2. Conversely, when plasma iron levels (and Tf saturation) increase, holo-Tf displaces HFE from TfR1, allowing formation of the HFE–TfR2 signaling complex. A prediction of this model is that inactivation of either HFE or TfR2 would yield a quantitatively similar iron overload phenotype. Nevertheless, the lack of HFE usually causes a milder form of hemochromatosis than the absence of TfR2 in human patients⁷² and in mice.⁷³ Furthermore, compound pathogenic mutations in both HFE and TfR2 have been associated with early onset juvenile hemochromatosis in humans,⁹⁸ while mice lacking both *Hfe* and *TfR2* accumulate more iron than mice lacking individual *Hfe* or *TfR2* genes.^{43,73} Taken together, these data suggest that HFE and TfR2 also exhibit independent functions.

The downstream events that occur following activation of the putative HFE–TfR2 signaling complex are far from being understood. Biochemical experiments have detected a link between HFE–TfR2 signaling and the ERK/MAP kinase pathway. Thus, the treatment of primary murine hepatocytes with holo-Tf activates this pathway and hepcidin expression, which could be blocked by the ERK-specific inhibitor U0-126.⁷⁴ Along similar lines, the simultaneous silencing of HFE and TfR2 was associated with reduced levels of ERK1/2 phosphorylation,⁷⁵ while low hepatic phospho-ERK1/2 levels were also observed in *Hfe*^{-/-}, *TfR2*^{-/-}, and double *Hfe*^{-/-}/*TfR2*^{-/-} mice and in HFE hemochromatosis patients.⁷³

There is also evidence of the involvement of the SMAD signaling pathway in the regulation of hepcidin by the HFE–TfR2 complex. Thus, holo-Tf triggered enhanced phosphorylation of the SMAD1–SMAD5–SMAD8 complex in primary murine hepatocytes.⁷⁴ In addition, the level of phosphorylation of the SMAD1–SMAD5–SMAD8 complex was significantly reduced in mice lacking HFE, TfR2, or both, and in HFE-related hemochromatosis patients.^{43,73,76} In experiments with wild-type mice, only the SMAD but not the ERK/MAPK pathway was activated following both acute (plasma) and chronic (hepatic) iron loading.⁴³ Further work is required to clarify the exact role of these pathways in iron-dependent signaling to hepcidin.

Regulation of Hepcidin Expression during Inflammation and ER Stress. *Hepcidin* transcription is potently induced by IL-6 via a mechanism involving STAT3 phosphorylation, translocation to the nucleus, and binding to a STAT-specific site within the *HAMP* promoter.^{77–79} This pathway leads to the accumulation of iron in macrophages and hypoferrremia, which are considered as innate immune responses during systemic inflammation. However, persistent upregulation of hepcidin by IL-6 greatly contributes to the development of anemia of

chronic disease.²⁰ Under inflammatory conditions or during infection, myeloid cells (macrophages and neutrophils) are also stimulated to generate hepcidin via IL-1 β , TLR2, or TLR4 signaling.^{6,31} ER stress is another cue that leads to transcriptional activation of hepcidin via the CREBH and CHOP pathways, possibly a part of a further protective innate immune strategy.^{6,31}

Regulation of Hepcidin Expression during Anemia and Hypoxia. Increased erythropoietic drive during anemia and ineffective erythropoiesis is known to suppress the expression of hepcidin.⁶ While erythropoietin (EPO) can reduce the level of expression of hepcidin by attenuating the binding of C/EBP α to the *HAMP* promoter, experiments with mice provided evidence that the inhibitory effects of EPO on hepcidin are indirect and require erythropoietic activity.^{80,81} GDF15 (growth differentiation factor 15) and TWSG1 (twisted gastrulation-1) are potential mediators of bone marrow signaling, as they suppress hepcidin in thalassemias and other iron-loading anemias.^{82,83} However, a general function of these proteins as “erythroid regulators” of hepcidin has been excluded.⁸⁴ Thalassemic patients express low hepcidin levels despite their high iron load, indicating a dominance of the erythroid signal over iron.^{85,86} In line with these data, experiments in mice confirmed that erythropoietic drive could inhibit hepcidin induction in response to iron or inflammation.⁶

Hypoxia is also known to suppress the expression of hepcidin.⁶ Genetic studies in mice with liver-specific disruption of the *Vhl* gene (von Hippel-Lindau), a negative regulator of HIF α (hypoxia inducible factor α) subunit expression, suggested a key role for HIFs in hepcidin regulation.⁸⁷ However, a direct transcriptional activity of HIFs on the *HAMP* promoter is not supported by biochemical data.⁸⁸ It is conceivable that the inhibitory effects of hypoxia on hepcidin expression are primarily triggered by increased erythropoietic drive. Consistent with this view, recent experiments suggest that hepatic HIF2 α inhibits hepcidin expression via an EPO-mediated increase in the level of erythropoiesis.⁸⁹ Additionally, biochemical studies demonstrated that hypoxia downregulates hepcidin expression by inhibiting SMAD4 signaling.⁹⁰

Hepcidin-Independent Regulation of Body Iron Metabolism. Hepcidin is the master regulator of both dietary iron absorption and systemic iron trafficking and homeostasis. However, these processes are fine-tuned by additional control mechanisms. Thus, the expression of DMT1 and DcytB in duodenal enterocytes is transcriptionally activated during iron deficiency via HIF2 α .^{91,92} Intestinal H-ferritin is also essential for proper dietary iron absorption, as the targeted ablation of this protein in the mouse intestine is associated with iron overload, despite functional preservation of the hepcidin–ferroportin axis.⁹³ In addition, *Ferroportin* and *DMT1* are subject to transcriptional^{94,95} and post-transcriptional regulation by the IRE–IRP system.^{96,97}

■ CELLULAR IRON METABOLISM

Cells have evolved metabolic strategies for safely importing and utilizing iron. Regulation of iron uptake, storage, intracellular trafficking, and utilization is critical for the maintenance of cellular iron homeostasis (Figure 3).

Cellular Uptake of Iron. Cell membranes and tight junctions between cells impede the free passage of iron. Cells therefore have transporters, chaperones, and chelators, which allow passage of iron across membranes and facilitate intracellular trafficking. With few exceptions, the majority of these

transporters belong to the solute carrier (SLC) family of proteins. Most mammalian cells acquire iron from circulating Tf upon binding to transferrin receptor 1 (TfR1).^{6,7} Tf, an 80 kDa glycoprotein, is synthesized and secreted mainly by the liver. Varying amounts are also produced in lymph nodes, thymus, spleen, salivary glands, bone marrow, and testis. Tf binds iron in plasma and extracellular fluids such as lymph and cerebrospinal fluid. It is equally distributed between plasma and extracellular fluids and has a half-life of 8 days. Tf is a homodimeric β -globulin, which binds two molecules of ferric iron with high affinity ($K_d = 10^{-23}$ M). Binding and release are accompanied by a conformational change. Furthermore, the interaction between iron and Tf is pH-dependent: at physiological plasma pH, Tf binds iron very strongly, whereas the interaction is essentially abolished at acidic pH (<5). Under physiological conditions, only a fraction of Tf (~30%) is saturated with iron. Catabolism of Tf takes place mainly in the liver by lysosomal degradation or glomerular filtration followed by reabsorption and degradation in renal tubules.⁹⁹ Mice and humans bearing mutations in the *Tf* gene develop severe anemia.⁷ Interestingly, nonhematopoietic cells display massive iron overload.¹⁰⁰ These studies highlight the importance of Tf-mediated iron delivery for erythropoiesis and imply the existence of alternative mechanisms for the uptake of cellular iron by non-hematopoietic cells.

TfR1 provides the physiological route for entry of Tf-bound iron into cells. It is expressed by most nucleated mammalian cells, and its levels correlate with cellular iron requirements. TfR1 is a disulfide-linked transmembrane glycoprotein that forms a homodimer with a molecular mass of 180 kDa, where each subunit binds one Tf molecule.¹⁰¹ The efficiency of the interaction does not depend on temperature or energy but rather on the iron content of Tf, with diferric Tf having the greatest affinity, monoferric Tf intermediate, and apo Tf the lowest. In contrast, endocytosis of Tf–TfR1 complexes is an energy-dependent process that involves endocytosis via clathrin-coated pits. Iron is released from Tf within endocytic vesicles due to acidification through the action of a v-ATPase proton pump. In a cooperative manner, Tf and TfR1 undergo conformational changes in the acidified endosome leading to iron release.^{102,103} The released Fe³⁺ is then reduced to Fe²⁺ by STEAP 3 (six-transmembrane epithelial antigen of prostate-3), a member of the metallo-reductase family.¹⁰⁴ Fe²⁺ is transported across the endosomal membrane into the cytosol by DMT1/SLC11A2 in most cells or by its homologue Nramp 1 (natural resistance-associated macrophage protein-1) in macrophages.^{105–107} In this regard, DMT1 is a dual-function protein, which regulates both systemic and cellular iron homeostasis. *Dmt1* inactivation in mice and humans leads to iron deficiency anemia.^{105,108,109} Similarly, spontaneous mutations in *Steap3* or its genetic ablation in mice causes iron deficiency in the erythroblasts but not systemically, suggesting the presence of alternative routes for iron uptake.^{110–112}

Newly assimilated cytosolic iron is transported to intracellular sites either for local use or for storage in ferritin (see below). The apoTf–TfR1 complex then returns to the cell surface where Tf dissociates from TfR1.¹⁰¹ Targeted deletion of the mouse *Tfrc* (encoding TfR1) gene causes embryonic lethality at day E11.5 because of severe anemia, indicating that Tf-mediated iron delivery is critical for hematopoietic cells.¹¹³ Nonhematopoietic tissues develop normally up to day E11.5, again highlighting the existence of alternative mechanisms for delivery of iron to cells in fetuses.¹¹³ Mutations in the *TFRC* gene in humans have not been described. Nonetheless, an

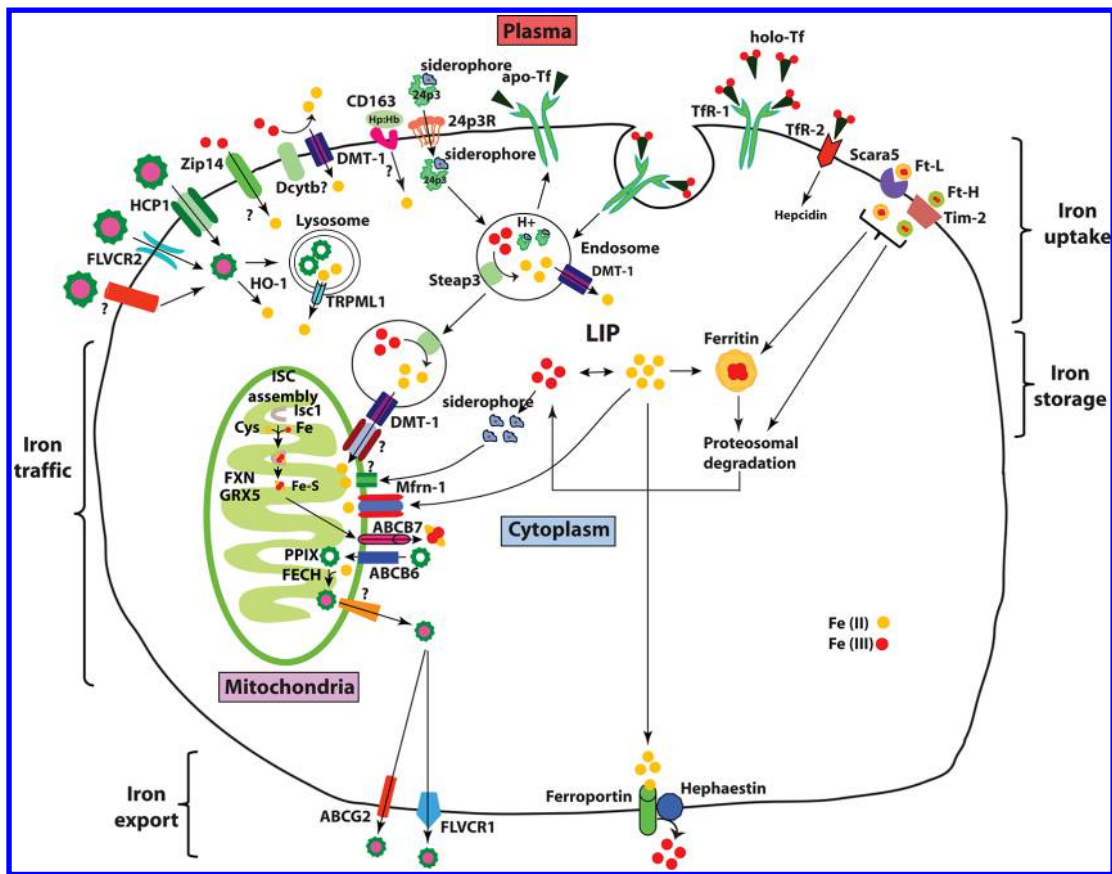


Figure 3. Cellular iron metabolism. Most cells in the body obtain iron from circulating differric Tf. Iron-loaded holo-Tf binds to Tfr1 on the cell surface, and the complex undergoes endocytosis via clathrin-coated pits. A proton pump acidifies the endosome, resulting in the release of Fe³⁺, which is subsequently reduced to Fe²⁺ by Steap3 and transported across the endosomal membrane to the cytosol by DMT1. DMT1 also facilitates dietary iron absorption. Apo-Tf is recycled back to the cell surface and released from Tfr1 to plasma to repeat another cycle. Newly acquired iron enters into the cytosolic “labile iron pool” (LIP), which is redox-active. LIP is chelated by the intracellular siderophore that facilitates intracellular trafficking of iron to mitochondria via an unknown receptor for metabolic utilization (such as synthesis of heme and iron–sulfur clusters), and cellular iron that is not utilized is either stored in ferritin or exported via ferroportin. Cells also export iron contained in ferritin and heme.

autoimmune-like disease with antibodies to Tfr1 can lead to severe anemia.¹¹⁴

Hepatocytes may take up Tf-bound iron via both Tfr1 and Tfr2. The amino acid sequence of the latter is 45% similar with that of Tfr1, yet Tfr2 differs significantly in terms of tissue distribution, affinity for Tf, and iron regulation.¹¹⁵ Tfr2 is also a type II transmembrane glycoprotein with cytoplasmic domains and ectodomains, and the Tf–Tfr2 complex is likewise internalized via clathrin-mediated endocytosis. However, while Tfr1 is almost ubiquitously expressed, the expression of Tfr2 is restricted to liver hepatocytes and to differentiated erythroblasts. In addition, Tfr2 binds Tf with an ~30-fold lower affinity than Tfr1,¹¹⁶ suggesting that it accounts for only a small fraction of iron uptake. Moreover, Tfr2 is less stable than Tfr1, mainly regulated post-translationally by protein degradation, and stabilized by differric Tf.¹¹⁷ The major function of Tfr2 appears to be regulatory. Tfr2 is involved in sensing iron-laden Tf and the control of hepcidin expression.^{118,119} Thus, mutations in the *TFR2* gene lead to non-HFE hemochromatosis due to hepcidin insufficiency in humans,²⁹ a phenotype that is recapitulated in *Tfr2* mutant mice.¹²⁰

NTBI comprises all forms of plasma iron that are bound to ligands other than Tf.^{14,121} It is undetectable under physiological conditions but emerges in a variety of iron overload syndromes, when the iron binding capacity of transferrin is saturated, or in atransferrinemia. Although NTBI is a key player

in hemochromatotic tissue iron overload, the underlying mechanism remains unknown. Chelators that display a lower affinity for iron than transferrin, such as lipocalin 24p3, are proposed to be NTBI ligands. This carrier protein sequesters iron-laden small hydrophobic molecules or siderophores (discussed in detail below). It has been proposed that 24p3-bound iron is important for epithelial morphogenesis, especially nephrogenesis.^{122,123} Nonetheless, *24p3* null mice display no developmental abnormalities in their kidneys and apparently exhibit normal systemic and cellular iron metabolism.^{124–127} Experiments with double HFE and *24p3* knockout mice excluded a role for 24p3 in NTBI uptake during hepatic iron overload.¹²⁷ Several biochemical and genetic studies identified other potential players in NTBI uptake, such as DMT1. Iron deficiency significantly enhances the expression of DMT1, and a gain-of-function mutation in DMT1 enhances NTBI uptake, suggesting the importance of DMT1 in the acquisition of elemental iron.^{128,129} Additionally, in the microcytic (*mk*) mouse, mutant DMT1 behaves like a calcium channel to facilitate NTBI uptake,¹³⁰ a notion that may have broader implications in understanding the functional relationship between iron transporters and other ion channels (discussed in detail below). On the basis of these studies, there was speculation that DMT1 is a major facilitator of NTBI uptake. However, the excessive buildup of iron in tissues of *Dmt1* null mice points to the

involvement of additional players.¹⁰⁸ Another candidate is the zinc transporter protein, Zip14/SLC39A14 (Zrt- and Irt-like protein 14), which facilitates NTBI-mediated iron delivery in cultured cells.¹³¹ Interestingly, HFE regulates Zip14-dependent NTBI uptake by controlling the half-life of Zip14.¹³² Zip14/Slc39a14 null mice do not exhibit apparent abnormalities in iron metabolism,¹³³ which may indicate redundancy of Zip14 in NTBI uptake. Nevertheless, it would be interesting to cross these animals with HFE^{-/-} mice and examine the effects of Zip14 ablation in iron loading. Consistent with studies of *mk* mice suggesting that similar transmembrane pores conduct Fe²⁺ and Ca²⁺ across membranes, the involvement in NTBI uptake has been documented for the widely expressed L-type voltage-gated calcium channels (LVGCCs), namely Ca_v1.1–1.4.^{134,135} Furthermore, calcium channel blockers have been reported to mitigate iron overload by enhancing the activity of DMT1.¹³⁶ However, these data have been disputed.¹³⁷ Despite the evidence from in vitro studies supporting a role for LVGCCs in iron trafficking, mice lacking Ca_v1.2 and -1.3 do not exhibit alterations in iron metabolism.¹³⁸ Combined, these studies suggest a significant redundancy in mechanisms for NTBI uptake and the lack of a single exclusive pathway.

Cells can also acquire iron that is in complexes with proteins or small molecules. For instance, internalization of ferritin via ferritin-specific receptors such as T-cell immunoglobulin and mucin domain-containing protein-2 (TIM-2), or Scavenge receptor family class A, member 5 (Scara5), facilitates iron import.^{139,140} However, Tim-2 null mice do not display any overt abnormalities in iron homeostasis.¹⁴¹ Silencing the H-ferritin receptor SCARA5, rather, contributes to cancer development.¹⁴² Ingested heme also serves as an important source of iron. The importance of this route of iron uptake is exemplified by the enhanced heme uptake observed in iron deficiency. Cells are thought to internalize heme via a receptor-dependent process (directly) or indirectly with the aid of a heme carrier protein-1 (HCP-1).¹⁴³ HCP-1, also known as proton-coupled folate transporter (PCFT), is a member of the solute carrier family (SLC46A1), which imports heme or folate into cultured cells or isolated frog oocytes.^{143,144} Imported heme is catabolized by heme oxygenases 1 and 2 in the endoplasmic reticulum (ER), and iron is released into the cytosol via DMT1 or transient receptor potential mucolipin 1 (TRPML1).^{145,146} Mice deficient in *Hcp-1* do not exhibit iron deficiency but rather disturbances in folate metabolism.¹⁴⁴ This phenotype is quite perplexing, given the fact that iron deficiency augments the expression of HCP-1,¹⁴³ and may argue against a physiological role for this protein in dietary heme absorption. Heme can be transported from lysosomes to the cytosol by heme response gene-1 (HRG-1) (SLC48A1).¹⁴⁷ The in vivo functional relevance of HRG-1 in mammalian heme assimilation awaits the derivation of mice lacking this gene.

In summary, mammalian cells obtain iron via multiple routes tailored to meet their specific biochemical requirements.

Cellular Iron Utilization and Intracellular Iron Trafficking Pathways. One of the least understood aspects of cellular iron metabolism is the trafficking of iron within the cell. It is generally believed that iron taken up by the cell is routed to mitochondria via the cytoplasm. Facilitators of trafficking of cytosolic iron to mitochondria were unknown until recently.

Iron taken up by Tf-dependent or -independent routes presumably enters into a labile intermediary pool or labile iron pool (LIP). The LIP is also termed in the literature as the “exchangeable”, “regulatory”, or “chelatable” iron pool because

its presence has been documented by using metal chelators.⁴⁶ It is defined as a low-molecular weight pool of weakly chelated iron,¹⁴⁸ including both Fe²⁺ and Fe³⁺, and represents a minor fraction of the total amount of cellular iron (~3–5%). The LIP links cellular iron uptake with iron utilization, storage, or export.¹⁴⁸ The other source of iron for this pool is the degradation of non-heme and heme iron-containing proteins. Iron within the LIP is thought to be in steady state equilibrium and is proposed to bind diverse low-molecular weight chelates, such as organic anions (phosphates, citrates, and carboxylates) and polyfunctional ligands [polypeptides and siderophores (discussed in detail below)]. Organelles also contain the LIP, which is estimated to have a concentration from ~6 to 16 μM.¹⁴⁹ Mitochondria are the principal consumers of cellular iron. Even though mitochondrial iron is mostly bound to proteins or heme, chelatable iron has been detected within the organelle in cultured hepatocytes and cardiomyocytes.¹⁵⁰ An increase in the size of the mitochondrial LIP is suspected under certain pathological conditions where heme export is impaired. A subpopulation of endosomes and lysosomes also contains a large amount of LIP, with an estimated concentration of 16 μM. It may be derived from the degradation of iron carrier proteins.¹⁴⁹

The LIP is readily available for iron utilization and may also contribute to adverse side effects as a source of redox-active iron for the Fenton reaction.^{148,151} In addition, the LIP operates as a mediator of apoptosis. Thus, iron scarcity in the cell leads to apoptosis, while similar effects are observed by targeting the LIP with chemical chelators such as deferoxamine (DFO) or biological chelators such as lipocalin 24p3 (see below).^{152,153} Moreover, apoptosis induced by these agents can be suppressed by exogenous supplementation with iron.¹⁵²

Mitochondria are central for the regulation of cellular iron metabolism, and the majority of iron imported into the cell is utilized within this organelle for the synthesis of heme and iron–sulfur clusters (ISCs).¹⁵⁴ Very little is known about intracellular iron transport pathways that facilitate mitochondrial iron import. This is an important subject because iron in its free form must be shielded and escorted to the sites of utilization. Until recently, the nature and identity of molecules that chaperone iron and facilitate its intracellular trafficking were completely obscure. Nonetheless, early studies indicated the existence of low-molecular weight iron-binding compounds or siderophore-like molecules that were capable of binding iron in mammalian cells.^{155,156} Interestingly, iron bound to siderophore-like molecules is a target for carrier proteins like 24p3.

Lipocalin 24p3, also known as lipocalin 2 (Lcn2) or siderocalin, is a member of the lipocalin family of proteins. This family includes more than 20 small secreted proteins that have a highly conserved squat β-barrel enclosing a cavity, which consists of a continuous eight-stranded, antiparallel β-sheet.¹⁵⁷ The cavity within the β-barrel binds, transports, and delivers small molecule ligands. By delivering this cargo via cell surface receptors, they are known to influence many cellular responses.^{123,153} Lipocalin 24p3 is a unique iron binding protein, in that it lacks the ability to bind iron directly. Instead, iron binding is mediated by a cofactor. Bacterially derived 24p3 forms a complex with an enterobactin–iron species with a 1:1:1 stoichiometry.¹⁵⁸ *Escherichia coli* enterobactin is the prototype of all bacterial siderophores (from the Greek, meaning “iron carriers” or “iron bearers”), low-molecular weight, Fe³⁺-specific chelating agents that are hyperexcreted at low iron concentrations. These compounds scavenge iron from the environment and transport it into bacteria by specific receptor proteins. Enterobactin

consists of three 2,3-DHBA (2,3-dihydroxybenzoic acid) and three L-serine molecules, cyclically linked to form a triserine–trilactone structure. Interestingly, 24p3 binds both 2,3-DHBA and enterobactin.¹⁵⁸ On the basis of these observations, it was proposed that 24p3 functions as a bacteriostat and operates in innate immunity.¹⁵⁸ In line with this prediction, 24p3 null mice are hypersensitive to bacterial septicemia.^{124,125} This mode of host defense is limited by the ability of 24p3 to sequester bacterial siderophores. In addition, certain bacteria biochemically modify their siderophores to evade capture by 24p3.¹⁵⁹

Several studies have demonstrated the association of mammalian 24p3 with siderophore-like molecules. It has been proposed that iron delivery or sequestration by 24p3 is crucial for nephrogenesis¹²² and mediates apoptosis.¹⁵² However, 24p3 deficient mice show normal kidney development and display no overt imbalances in iron metabolism but display multiple abnormalities in hematopoietic cells.¹²⁶ A recent study identified 2,5-DHBA as a mammalian cofactor that facilitates loading of iron onto 24p3. This molecule is remarkably chemically similar to 2,3-DHBA, which is generated by *E. coli* as a component of enterobactin.¹⁶⁰ The biosynthesis of enterobactin is mediated by a two-step process: First, a series of reactions convert chorismate into 2,3-DHBA. Second, enterobactin peptide bonds are formed from three molecules each of 2,3-DHBA and L-serine, by nonribosomal peptide synthetases.¹⁶¹ Six enzymes participate in the biosynthesis of enterobactin. Among them, EntA, a NAD⁺-dependent 2,3-dihydrobenzoate dehydrogenase, catalyzes the rate-limiting step. Elimination of EntA inhibits the synthesis of not only 2,3-DHBA but also enterobactin.^{161,162} Interestingly, the mammalian siderophore (2,5-DHBA) is biosynthesized by an evolutionarily conserved pathway, and BDH2 (3-hydroxy butyrate dehydrogenase), a homologue of bacterial EntA, catalyzes the rate-limiting step. Elimination of *bdh2* inhibits 2,5-DHBA biosynthesis.¹⁶⁰ In contrast to 24p3, the majority of tissues synthesize 2,5-DHBA, suggesting that it has functions besides the loading of iron onto 24p3.¹⁶⁰ Siderophore-depleted mammalian cells, zebrafish, and yeast fail to synthesize heme, suggesting that 2,5-DHBA facilitates mitochondrial iron uptake.¹⁶⁰ Mitochondria are evolutionary relics of aerobic bacteria, which supply host cell energy in the form of ATP generated in an oxygen-dependent manner. Iron is integral to all the protein subunits involved in the respiratory chain. Thus, the presence of a phylogenetically conserved siderophore-like molecule whose structure and biogenesis are evolutionarily linked to bacterial siderophores makes good sense. Although a siderophore-like molecule in mammals has been identified, the transporters or receptors that mediate siderophore-dependent mitochondrial iron uptake remain unknown. Additional cytosolic chaperones that traffic iron in the cell have been reported. For instance, evolutionarily conserved glutaredoxins Grx3 and Grx4 play an important role in iron sensing and intracellular iron trafficking, and their absence impairs mitochondrial iron import.¹⁶³

The mechanism of entry of iron into mitochondria has been explored recently. Iron must traverse both outer and inner mitochondrial membranes to the site of heme synthesis, the matrix. Mitochondrial outer membrane facilitators of iron import were identified by computational screening, which yielded several members of the SLC family, namely, SLC25a39 and SLC22A4, as well as a non-SLC transporter, TMEM14C.¹⁶⁴ All these genes are consistently and specifically coexpressed with genes encoding enzymes of the heme synthesis pathway.¹⁶⁴ Their targeted knockdown in the developing zebrafish embryo results in

heme deficiency, thus validating their role in the import of iron into mitochondria.¹⁶⁴ Interestingly, members of the SLC family also facilitate the import of iron across the mitochondrial inner membrane. Most notable are SLC25A37 or Mitoferrin-1 (*Mfrn1*) and SLC25A38 or Mitoferrin-2 (*Mfrn2*), which are important for the import of mitochondrial iron into erythroid and nonerythroid cells, respectively.¹⁶⁵ Mitoferrin-1 levels in the developing erythron are stabilized by a member of the ATP-binding cassette transporter, ABCB10.¹⁶⁶ Although Mitoferrin-1 and Mitoferrin-2 are highly homologous, they exhibit no functional redundancy. Thus, overexpression of Mitoferrin-2 cannot rescue mitochondrial iron deficiency due to depletion of Mitoferrin-1.¹⁶⁷ Genetic ablation of *Mfrn1* confers embryonic lethality due to defective hemoglobinization.¹⁶⁵ However, conditional deletion of *Mfrn1* in the hematopoietic system results in defective erythroblast formation, leading to anemia. In contrast, targeted deletion of *Mfrn1* in liver hepatocytes results in no discernible phenotypic or biochemical abnormalities under normal conditions.¹⁶⁸ Despite these advances, how iron is transported across the outer mitochondrial membrane remains elusive. Siderophore-dependent iron transport supports mitochondrial heme biogenesis. The relationship between the SLC family of mitochondrial transporters and the mammalian siderophore is currently unknown.

An alternative to chaperone- or siderophore-mediated delivery of iron to the mitochondria has been proposed for the developing erythron. According to the “kiss-and-run” model, which is based on kinetic and imaging data, Tf-bound iron is delivered directly into the mitochondria upon contact of Tf-containing endosomes and mitochondria.¹⁶⁹ The mediators that could facilitate this process are unclear.

Finally, the iron regulatory proteins [IRPs (discussed in detail below)] whose primary function is to regulate cellular iron homeostasis are also critical for ensuring adequate iron supplies for mitochondria, at least in liver hepatocytes.¹⁷⁰ ISC limitations or even heme insufficiency is sensed as mitochondrial iron deficiency, and these conditions activate IRPs in the cytosol. Activated IRPs increase the level of cellular iron uptake and concomitantly reduce the extent of storage and export of iron.^{7,170}

Mitochondrial Handling of Iron. As noted above, iron influences many aspects of mitochondrial metabolism. Imported iron is utilized for the biosynthesis of heme and ISCs, and excess iron is stored in the mitochondrion-specific iron storage protein mitochondrial ferritin or mitoferritin (*Ftmt*) (see below).

Heme synthesis begins and ends in mitochondria, but intermediate steps occur in the cytoplasm (reviewed in ref 171). The first step is the condensation of succinyl coenzyme A and glycine in the mitochondrial matrix to form 5-amino-levulinic acid (ALA), which is catalyzed by erythroid-specific ALA synthase 2 (*ALAS2*) or housekeeping *ALAS1* in nonerythroid cells. Mutations in *ALAS2* result in anemia, heme deficiency, and mitochondrial iron overload, underscoring the importance of this enzyme.¹⁷² ALA is then exported across mitochondrial membranes into the cytosol. The transporters or receptors that mediate ALA mitochondrial cross traffic are not known. Subsequently, ALA is converted to coproporphyrinogen in a series of reactions in the cytoplasm. The heme intermediate is then transported across the mitochondrial outer membrane for iron insertion by ABCB6, a member of the ATP-binding cassette (ABC) family.¹⁷³ The final step, insertion of iron into protoporphyrin, is catalyzed by mitochondrial ferrochelatase (*Fech*). Mutations that render *FECH* inactive cause erythropoietic

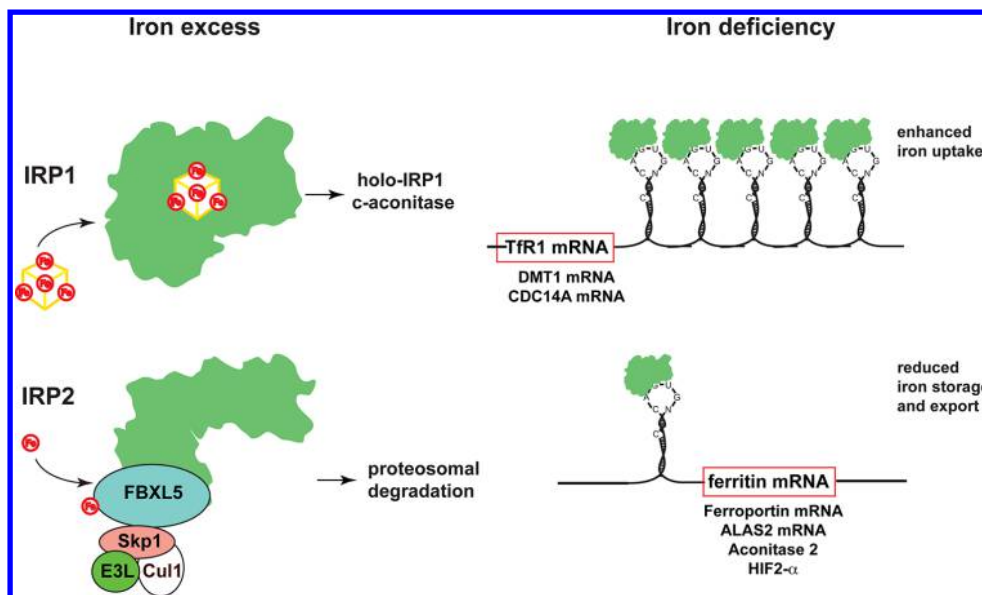


Figure 4. Cellular iron balance. A typical IRE motif consists of a hexanucleotide loop with the sequence 5'-CAGUGH-3' (H could be A, C, or U) and a stem, interrupted by a bulge with an unpaired C residue. IREs post-transcriptionally control expression of regulators of cellular iron metabolism in concert with IRPs. Translational-type IRE–IRP interactions in the 5' UTR modulate the expression of the mRNAs encoding H- and L-ferritin, ALAS2, m-aconitase, ferroportin, and HIF-2 α , which in turn control iron storage, erythroid iron utilization, energy homeostasis, iron efflux, and hypoxic responses, respectively. Conversely, IRE–IRP interactions in the 3' UTR stabilize the mRNAs encoding TfR1, DMT1, and Cdc14A, which are involved in iron uptake, iron transport, and the cell cycle, respectively. Under physiological conditions, IRP1 is regulated by a reversible ISC switch. Iron deficiency promotes ISC disassembly and a conformational rearrangement, resulting in conversion of IRP1 from c-aconitase to an IRE-binding protein. The ISC is regenerated in iron-replete cells. Hypoxia favors maintenance of the ISC, while H₂O₂ promotes its disassembly. When the ISC biogenesis pathway is not operational, iron leads to ubiquitination of apo-IRP1 by the FBXL5 E3 ligase complex (including Skp1, Cul1, and Rbx1), resulting in proteasomal degradation. IRP2 is stable in iron deficient and/or hypoxic cells; under these conditions, FBXL5 undergoes ubiquitination and proteasomal degradation. An increase in iron and oxygen levels stabilizes FBXL5 by formation of an Fe–O–Fe center in its hemerythrin domain, triggering the assembly of an E3 ubiquitin ligase complex together with Skp1, Cul1, and Rbx1. This complex ubiquitinates IRP2, leading to its recognition by the proteasome and its degradation.

protoporphyrin and liver damage.¹⁷⁴ As discussed above, heme biosynthesis has been extensively studied, but the process by which heme is ferried across mitochondrial membranes into the cytosol for association with globins and apo cytochromes remains unknown. Likewise, no specific transporters or receptors that facilitate mitochondrial export of heme have been reported.

Mitochondrial iron is also utilized for the synthesis of ISCs. These cofactors consist of iron cations and sulfide anions. ISCs are assembled on scaffold proteins and are then targeted to specific proteins via sulfur of cysteine residues. In mammals, the scaffold protein is “ISC assembly protein U” (IscU).¹⁷⁵ Loading of iron onto IscU is very likely mediated by mitochondrial frataxin,¹⁷⁶ which thereby plays an important role in mitochondrial iron metabolism. Thus, mutations in the *FRDA* gene encoding frataxin result in Friedreich ataxia, a neurodegenerative disease characterized by profound mitochondrial abnormalities and iron toxicity.¹⁷⁷ In addition, targeted disruption of this gene in mice causes embryonic lethality, while its conditional deletion in brain or muscle results in neuronal or cardiac symptoms.¹⁷⁷ Although the majority of ISC biogenesis takes place inside mitochondria, ISCs may also be synthesized in the cytoplasm.¹⁷⁸ The biological relevance of the mediators of cytosolic ISC biogenesis is not well understood. Nonetheless, the mitochondrial inner membrane protein, ABCB7, is important for the maturation of cytosolic ISCs because targeted deletion of *Abcb7* results in altered cytosolic ISC levels and retards embryonic development.^{179,180} ABCB7 may traffic ISCs (or ISC precursors) across mitochondrial membranes to the

cytoplasm.¹⁷⁹ Multiple mechanisms ensure an adequate supply of iron to mitochondria. Perturbations of these processes affect iron homeostasis in both mitochondria and the cytoplasm.¹⁸¹ Human frataxin deficiency severely disrupts mitochondrial ISC biogenesis, promotes mitochondrial iron overload, and causes increased sensitivity to oxidant stress.¹⁷⁷ Mutations in human *ABCB7* result in defective cytosolic ISC maturation and mitochondrial iron overload leading to X-linked sideroblastic anemia, which is also associated with developmental abnormalities in the brain.¹⁸² The specific mechanism by which *ABCB7* deficiency contributes to anemia is unclear. Nonetheless, *ABCB7* interacts with Fech, and *ABCB7* plays a role in supplying iron to Fech for incorporation into protoporphyrin.

Cellular Iron Balance. While systemic iron metabolism is predominantly regulated at the transcriptional level, cellular iron balance is largely controlled by post-transcriptional mechanisms. The cytoplasmic iron regulatory proteins (IRPs) determine the fate of several mRNAs upon binding to their iron-responsive elements (IREs). These structural motifs are within their untranslated regions (UTRs) (Figure 4). The mRNAs encoding TfR1 and ferritin define prototypic examples of coordinate post-transcriptional regulation by IRE–IRP interactions.^{6,7}

IREs. IREs are evolutionarily conserved stem–loop structures of 25–30 nucleotides.¹⁸³ The stem is divided into an upper and a lower segment, which are separated by an unpaired C residue or an asymmetric UGC/C bulge/loop. The loop consists of a conserved 5'-CAGUGH-3' sequence (H denotes A, C, or U), where the underlined C and G residues interact. TfR1 mRNA

contains multiple IREs within its long 3' UTR, while the mRNAs encoding H- and L-ferritin contain a single IRE in their 5' UTRs.

In iron deficiency, IRPs bind with high affinity ($K_d \approx 10^{-12}$ M) to target IREs. This results in stabilization of TfR1 mRNA and steric inhibition of ferritin mRNA translation. Under these conditions, accumulation of TfR1 promotes the uptake of cellular iron from plasma Tf, while inhibition of ferritin biosynthesis prevents storage of iron, allowing its metabolic utilization. Conversely, in response to excess cellular iron, IRPs are inactivated, which leads to TfR1 mRNA degradation and ferritin mRNA translation. This minimizes further internalization of iron via TfR1 and promotes the storage of excessive intracellular iron into ferritin. Interestingly, mutations in the L-ferritin IRE that prevent IRP binding are causatively linked to hereditary hyperferritinemia-cataract syndrome (HHCS), an autosomal dominant disorder characterized by overexpression of serum ferritin (without iron overload) and early onset cataract.¹⁸⁴ Mutations, in the IRE of H-ferritin have been associated with a rare form of autosomal dominant iron overload in a Japanese pedigree, but the underlying pathogenic mechanism remains unclear.¹⁸⁵

Functional IRE motifs have also been identified in mRNAs encoding proteins of iron transport (DMT1 and ferroportin) and erythroid heme synthesis (ALAS2), as well as others that appear to be less related to iron homeostasis [mitochondrial aconitase, *Drosophila* succinate dehydrogenase, HIF-2 α , MRCK α , Cdc14A, β -amyloid precursor protein, and α -synuclein (reviewed in ref 6)]. It is notable that mRNAs encoding TfR2, Ftmt, and housekeeping ALAS1 as well as alternatively spliced transcripts of DMT1 and ferroportin do not possess an IRE. The expression of IRE or non-IRE isoforms of DMT1 and ferroportin mRNAs confers versatility and tissue-specific regulation. For instance, the prevalence of the non-IRE isoform of ferroportin mRNA in duodenal enterocytes and erythroid precursor cells¹⁸⁶ allows its expression during iron deficiency¹⁸⁷ via evasion of the translational IRP block. It should also be noted that in erythroid cells, which require very large amounts of iron for hemoglobinization, the expression of TfR1 mRNA is induced by transcriptional mechanisms, and its stability is uncoupled from iron supply and IRP regulation.^{188,189} Transcriptional regulation of TfR1 as well as ferritin mRNA expression has also been established in other settings (reviewed in refs 6 and 7).

IRPs. IRP1 and IRP2 are homologous to mitochondrial aconitase and other members of the ISC isomerase family,^{6,7} which possess a cubane ISC in their active site. In iron-replete cells, IRP1 assembles an ISC and functions as cytosolic aconitase (catalyzing the conversion of citrate to iso-citrate via a *cis*-aconitate intermediate). The ISC keeps IRP1 in a closed conformation, which precludes access of IREs. Iron deficiency promotes the loss of the ISC and a resulting structural rearrangement of the protein that acquires IRE binding activity. Thus, IRP1 is a bifunctional protein that is regulated by an ISC switch.

Despite its extensive homology with IRP1, IRP2 does not assemble an ISC and is regulated by a distinct mechanism. It remains stable in iron-starved or hypoxic cells and undergoes ubiquitination and proteasomal degradation in response to iron and oxygen. The mechanism involves FBXL5, an E3 ubiquitin ligase that contains an N-terminal hemerythrin domain with a Fe–O–Fe bridge.^{190,191} Iron deficiency and/or hypoxia leads to disassembly of the Fe–O–Fe bridge, which destabilizes FBXL5 and allows accumulation of IRP2. Interestingly, FBXL5 may also target apo-IRP1 for iron-dependent degradation;

however, this occurs only as a backup mechanism under conditions where ISC assembly is defective.^{192,193}

The ablation of both IRPs leads to early embryonic lethality at the blastocyst stage.¹⁹⁴ Intestine-specific disruption of both IRPs has been associated with growth defects, intestinal malabsorption, dehydration, and weight loss.¹⁹⁵ Likewise, disruption of IRPs in hepatocytes causes premature death due to liver damage, mitochondrial abnormalities, and defects in heme and ISC biosynthetic pathways.¹⁷⁰

A single disruption of either IRP1 or IRP2 is not lethal, indicating a functional redundancy of these proteins. *IRP1*^{-/-} mice do not develop any apparent pathology but misregulate TfR1 and ferritin expression in the kidney and brown fat.¹⁹⁶ *IRP2*^{-/-} mice exhibit microcytosis and hypochromic anemia, associated with iron overload in the duodenum and the liver, and relative iron deficiency in the spleen.^{197,198} The deregulation of tissue iron homeostasis in these animals can be explained by cell-autonomous functions of IRP2.¹⁹⁹ Some aged *IRP2*^{-/-} mice develop brain iron overload and deposition in overexpressed ferritin.²⁰⁰ This leads to a progressive neurodegenerative disorder, possibly as a result of the decreased availability of iron (functional iron deficiency).

Mice lacking FBXL5 die early in embryogenesis, apparently from deleterious effects of iron accumulation and subsequent iron-induced damage to tissues. Their pathology resembles clinical features of neonatal hemochromatosis, which is fatal due to liver failure resulting from excessive deposition of iron in this organ.²⁰¹ Interestingly, ablation of IRP2 rescues the FBXL5 null phenotype, consistent with FBXL5 being a repressor of IRP2. Mice bearing liver-specific disruption of FBXL5 develop severe steatohepatitis, associated with hepatic iron overload and oxidative stress. Collectively, the data described above highlight the significance of the IRE–IRP system in the control of mammalian iron homeostasis.

Cellular Iron Storage. Cellular iron in excess of immediate needs is stored as an iron oxide within the nanocavity of ferritin. Ferritin is an evolutionarily conserved, ubiquitous protein that can accommodate up to 4500 iron atoms. In mammals, ferritin is a heteropolymer of 24 subunits of two types, heavy (H) and light (L), which assemble to make a hollow spherical shell (reviewed in ref 202). L-Ferritin is predominant in iron storing tissues, whereas H-ferritin is preferentially expressed in cells that take up and release iron rapidly. Different proportions of ferritin subunits give rise to the heterogeneity of the holoprotein in various tissue types. A glycosylated L-ferritin subunit circulates in serum and exhibits a low level of saturation with iron. Its origin is debated. The levels of serum ferritin increase in response to systemic iron load or infection.⁶ Ferritin secretion may provide a mechanism for limiting iron storage after a shift from high to low iron concentrations, and prior to activation of IRPs.²⁰²

Channels in the ferritin shell may facilitate the entry and exit of iron. The ferroxidase activity of H-ferritin converts Fe²⁺ to Fe³⁺, which is necessary for the deposition of iron into the nanocage. L-Ferritin induces iron nucleation and increases the rate of turnover of the ferroxidase activity. The mechanism by which iron is delivered to ferritin remains elusive. Experimental evidence suggests the involvement of the cytosolic iron chaperone poly(rC)-binding protein 1 (PCBP1).²⁰³ The release of iron from ferritin is mediated by multiple mechanisms (reviewed in ref 202). Physiologically, degradation of ferritin is coupled to the supply of available metabolic iron under iron-limiting conditions.²⁰⁴ Treatment with iron

Table 2. Regulators of Cellular Iron Metabolism in Animal Models and Human Disorders

metabolic process	protein	gene	function	mouse model	phenotype	human disease	refs
cellular iron and/or heme uptake	transferrin	<i>Tf</i>	plasma, lymph, and CSF ferric iron carrier	<i>lpx/lpx</i>	hypochromic, microcytic anemia	atransferrinemia	7, 100
	transferrin receptor 1	<i>Tfrc</i>	facilitates Tf-dependent iron uptake	<i>Tfrc^{-/-}</i>	embryonic lethality	autoimmune-like with Abs to TfR1; anemia	113
	transferrin receptor 2	<i>TfR2</i>	regulates hepcidin; mediates Tf-bound and non-transferrin-bound iron uptake	<i>TfR2^{-/-}</i>	iron overload	hemochromatosis	61
	six-transmembrane epithelial antigen of the prostate	<i>Steap3</i>	erythroid endosomal ferrireductase	<i>mt:1054 Steap3^{-/-}</i>	microcytic, hypochromic anemia; iron deficiency	unknown	110–112
	divalent metal transporter 1	<i>DMT1</i>	endosomal ferrous iron transporter; transmembrane non-transferrin iron transporter	<i>mtk/mk DMT1^{-/-}</i>	hypochromic, microcytic anemia; impaired iron absorption	iron overload in liver; anemia	105, 108, 109
	duodenal cytochrome b	<i>Dcytb</i>	intestinal ferrireductase	<i>Dcytb^{-/-}</i>	normal	unknown	9
	Zrt- and Irt-like protein 14	<i>Zip14</i>	non-transferrin iron transporter in liver	<i>Slc39A14^{-/-}</i>	Impaired gluconeogenesis; no abnormalities in iron metabolism	unknown	133
	L-type Ca ²⁺ channels	<i>Ca_v1.1–1.4</i>	calcium/iron transporters	<i>Ca_v1.2^{-/-}</i> <i>Ca_v1.3^{-/-}</i>	no abnormalities in iron metabolism	unknown	138
	T-cell Ig domain and mucin domain protein-2 (TIM-2)	<i>Tim-2</i>	H-ferritin receptor	<i>Tim2^{-/-}</i>	no overt abnormalities related to iron metabolism	unknown	141
	scavenger receptor class A member 5	<i>Scara5</i>	L-ferritin receptor	not available	unknown	predisposition to liver cancer	142
	feline leukemia virus subgroup C receptor 2	<i>FLVCR2</i>	heme importer	not available	unknown	Fowler syndrome	219
	heme carrier protein 1	<i>HCP1</i>	intestinal heme transporter	<i>HCP^{-/-}</i>	no alterations in iron homeostasis	folate malabsorption	144
	transient receptor potential mucopolidosis-associated protein	<i>TRPML1</i>	iron transporter from endosomes and lysosomes	not available	unknown	mucopolidosis	146
	heme responsive gene 1	<i>HRG1</i>	exporter of heme into cytoplasm from lysosomes	not available	unknown	unknown	7
	heme oxygenase-1	<i>HO-1</i>	heme iron reutilization	<i>HO-1^{-/-}</i>	iron overload	iron overload, hemolytic anemia	11
	heme oxygenase-2	<i>HO-2</i>	heme iron reutilization	<i>HO-2^{-/-}</i>	no disturbances in iron homeostasis	unknown	11
	24p3	<i>24p3</i>	facilitator of non-transferrin iron import	<i>24p3^{-/-}</i>	no observable alterations in iron homeostasis	unknown	127
cellular iron storage	H-ferritin (FT-H)	<i>Fth1</i>	iron storage protein subunit; ferroxidase	<i>Fth1^{-/-}</i>	embryonic lethality	iron overload	185, 202
	L-ferritin (FT-L)	<i>Fth</i>	iron storage protein subunit	not available	unknown	IRE mutation, hyperferritinemia-cataract syndrome; non-IRE mutation, neuroferritinopathy	185, 202
intracellular iron trafficking	ferrochelatase (FECH)	<i>Fech</i>	insertion of iron into porphyrin	<i>Fech^{ml}Pos</i> <i>Fech^{-/-}</i>	microcytic, hypochromic anemia; embryonic lethality	erythropoietic protoporphyria	172, 174
	S-amino-levalulinic acid synthase (ALAS2)	<i>Alas2</i>	heme biogenesis	<i>Alas2^{-/-}</i>	embryonic lethality; iron overload	X-linked sideroblastic anemia	171
	ATP-binding cassette family member B 10 (ABCB10)	<i>Abcb10</i>	interacts with Fechl and Mitoferrin-1; transport ligand unknown	<i>Abcb10^{-/-}</i>	embryonic lethality; arrested erythroid differentiation	unknown	166
	ATP-binding cassette family member B 7 (ABCB7)	<i>Abcb7</i>	interacts with Fechl; cytosolic ISC maturation	<i>Abcb7^{-/-}</i>	midgestational death; defective hematopoiesis; hepatic iron overload, ataxia porphyria?	hereditary X-linked sideroblastic anemia, ataxia	180, 182
	ATP-binding cassette family member B 6 (ABCB6)	<i>Abcb6</i>	import of porphyrin into mitochondria?	unpublished	unpublished	unknown	173
	Mitoferrin-1 (MFRN1)	<i>Mfrn1</i>	mitochondrial iron import	<i>Mfrn1^{-/-}</i>	embryonic lethality; conditional deletion confers anemia and defective hematopoiesis	erythropoietic protoporphyria	165, 168
	glutaredoxin 5 (GRX5)	<i>Grx5</i>	facilitator of ISC biogenesis	not available	unknown	anemia; iron overload	7

Table 2. continued

metabolic process	protein	gene	function	mouse model	phenotype	human disease	refs
	frataxin (FXN)	<i>Fxn</i>	mitochondrial iron chaperone?	<i>Fxn</i> ^{-/-}	embryonic lethality; conditional deletion confers brain and heart deformities	Friedreich ataxia	177
cellular iron and/or heme export	3-hydroxy butyrate dehydrogenase-2 (BDH2) feline leukemia virus subgroup C receptor 1 (FLVCR1)	<i>Bdh2</i> or <i>Dhrs6</i> <i>FLVCR1</i>	siderophore biosynthesis heme exporter	<i>Bdh2</i> ^{-/-} <i>FLVCR1</i> ^{-/-}	anemia, iron overload, splenomegaly embryonic lethal; systemic iron overload and erythroid abnormalities in conditional deletion	diabetes Diamond Blackfan anemia? Neurological abnormalities	unpublished 216, 218
	ATP-binding cassette family member C, G2 (ABCG2)	<i>Abcg2</i>	partially exports heme; PPIX exporter	<i>Abcg2</i> ^{-/-}	elevated levels of PPIX; no iron overload	gout	220, 221
	ferroportin (SLC40A1; MTP1)	<i>Slc40a1</i>	regulates efflux of iron from cells	<i>Slc40a1</i> ^{-/-pm}	embryonic lethality; conditional deletion, iron deficiency	hemochromatosis, macrophage iron overload (HH type 4) unknown	19, 215 194–200
cellular iron balance	iron regulatory protein 1 (IRP1)	<i>Aco1</i>	post-transcriptional regulation of target mRNAs via IREs; cytosolic aconitase	<i>IRP1</i> ^{-/-}			
	iron regulatory protein 2 (IRP2)	<i>Irb2</i>	post-transcriptional regulation of target mRNAs via IREs	<i>IRP2</i> ^{-/-}		unknown	194–200

chelators or expression of ferroportin accelerates ferritin degradation.^{205,206}

Changes in iron availability regulate *ferritin* gene expression mainly at the post-transcriptional level via the IRE–IRP system (discussed above). Additionally, ferritin expression is regulated transcriptionally, which determines the tissue distribution of H and L chains. Iron homeostasis is profoundly altered during inflammation and infection. Although multiple mechanisms collectively influence iron balance (such as induction of hepcidin by IL-6), alteration of ferritin expression by proinflammatory cytokines such as TNF α or IL-1 α substantially contributes to reprogramming of iron homeostasis.⁶ Ferritin is transcriptionally activated under oxidative stress via an upstream antioxidant response element (ARE) in the promoter region of the *ferritin* genes.²⁰⁷ In contrast, extracellular H₂O₂ inhibits ferritin mRNA translation by activating the IRE–IRP regulatory system.^{6,7}

By sequestering redox-active iron, ferritin plays an important antioxidant role and promotes cell survival. Thus, overexpression of ferritin decreases the size of the LIP, impedes the generation of ROS, and confers resistance to oxidative damage.²⁰⁸ Moreover, H-ferritin depletion triggers opposite effects.²⁰⁷ Genetic deletion of *Fth1* (encoding H-ferritin) results in embryonic lethality, suggesting that its ferroxidase activity is critical.¹⁸⁵ Conditional ablation of *Fth1* in liver hepatocytes results in iron-induced oxidative damage because these cells cannot sequester and detoxify iron.¹⁸⁵ Mutations in L-ferritin are associated with an autosomal dominant neurological disorder (neuroferritinopathy), characterized by brain iron overload and entrapment of iron in mutant ferritin shells, which causes functional iron deficiency.¹⁸⁵

Mitochondrial ferritin (Ftmt) is encoded by a distinct nuclear gene²⁰⁹ and possesses ferroxidase activity, by analogy to H-ferritin. In contrast to that of cytosolic ferritin, the expression of Ftmt is restricted to few tissues and is not iron-regulated.²¹⁰ Ftmt serves as a molecular sink to prevent accumulation of unshielded iron in mitochondria, which protects the organelle against iron's toxicity. Ftmt levels are increased in sideroblastic anemia.¹⁸⁵ Forced overexpression or depletion of Ftmt results in profound alterations of mitochondrial as well as cytosolic iron levels.²¹¹

Cellular Iron Export. Cellular iron export routinely occurs in specialized cells such as enterocytes and macrophages that are involved in iron absorption and recycling, respectively. The main purpose of iron export is to maintain adequate plasma iron levels and to meet systemic needs. Iron export involves coordination between many enzymes and proteins. Ferroportin, a member of the solute carrier family, facilitates the export of iron from enterocytes, macrophages, hepatocytes, and the extraembryonic visceral endoderm (ExVE). As discussed above, iron is reduced in endosomes prior to being released into the cytoplasm. Thus, ferroportin exports Fe²⁺, which has to be oxidized to Fe³⁺ upon its release into plasma for binding to Tf (reviewed in ref 212). This is mediated by the blue copper ferroxidases ceruloplasmin (soluble in serum or plasma membrane-associated in some cell types) and hephaestin (expressed on the plasma membrane of enterocytes and other cell types). These enzymes thus work in concert with ferroportin to coordinate iron export and oxidation. As copper is essential for ferroxidase activity, adequate levels of this metal are required for proper iron balance (reviewed in ref 213).

Complete disruption of ferroportin in mice is associated with early embryonic lethality, while conditional ablation leads to the

accumulation of iron in target cells, consistent with a function of this protein as the sole iron exporter.²¹⁴ In humans, ferroportin autosomal dominant mutations lead to “ferroportin disease”. Mutations inhibiting iron efflux promote macrophage iron loading, low serum iron levels, and transferrin saturation. On the other hand, mutations that impair the binding of hepcidin cause parenchymal iron overload, relatively high serum iron levels, and transferrin saturation, as in classical hereditary hemochromatosis.^{23,215}

Cells may also export iron bound to ferritin, especially in necroinflammation, or heme iron. Feline leukemia virus subgroup C receptor 1 (FLVCR1) facilitates the efflux of heme from hematopoietic cells. Suppression or forced expression of FLVCR1 enhances or depletes the cytoplasmic heme content, respectively.^{216,217} Thus, it has been proposed that FLVCR1 mediates the efflux of heme from erythroblasts to ensure their survival and from macrophages to regulate hepatic and systemic iron homeostasis. *Flvcr1*^{-/-} mice exhibit embryonic lethality and lack definitive erythropoiesis (Table 2). In contrast, neonatal deletions of *Flvcr1* cause severe macrocytic anemia with proerythroblast maturation arrest.²¹⁶ Point mutations in human *FLVCR1* are surprisingly not associated with erythroid disorders. Instead, affected patients exhibit neurological and vision abnormalities.²¹⁸ Interestingly, the related protein FLVCR2 appears to promote heme import.²¹⁹

In addition to the list of heme exporters, an ATP binding cassette family member, ABCG2, has also been implicated in cellular heme export. Thus, genetic ablation of *Abcg2* results in the accumulation of the heme synthesis intermediate, protoporphyrin IX (PIX), suggesting a function in heme or porphyrin export. Protoporphyrin abnormally accumulates in mice deficient for *Abcg2*, suggesting that *Abcg2* aids in porphyrin export.²²⁰ Nevertheless, mutations in human *ABCG2* are not associated with heme abnormalities, but rather with elevated levels of uric acid.²²¹

■ CONCLUSIONS

Iron is vital yet poorly bioavailable and potentially toxic. Cells and multicellular organisms have evolved sophisticated mechanisms for coping with the challenges of iron acquisition and handling. Remarkable progress has been made in understanding the regulation of mammalian iron metabolism. Mammals primarily control dietary iron absorption and systemic iron traffic via hepcidin, a hormonal peptide that responds to physiological stimuli. Cellular iron uptake, storage, and utilization are coordinately regulated by the IRE–IRP system. Fine-tuning is achieved by further regulatory pathways, which operate at the systemic and cellular levels. While basic mechanisms for mammalian iron homeostasis are now fairly well understood, several issues that remain open include the molecular characterization of iron sensing by hepcidin and the IRE–IRP pathways, the elucidation of iron trafficking inside cells, and the clarification of the physiological significance of the mammalian siderophore–24p3 network.

■ AUTHOR INFORMATION

Corresponding Author

*E-mail: lxd59@case.edu. Phone: (216) 368-1513. Fax: (216) 368-0494.

Funding

This work is supported by National Institutes of Health Grants K01CA113838 and R01DK081395 and Case Western Reserve University start-up funds to L.D. L.D. is also a recipient of

career developmental awards from the March of Dimes and the American Society of Hematology. K.P. is supported by a grant from the Canadian Institutes for Health Research (MOP-86514) and holds a Chercheur National career award from the Fonds de la Recherche en Santé du Québec (FRSQ).

Notes

The authors declare no competing financial interest.

■ ACKNOWLEDGMENTS

We thank John Protasiewicz for insightful comments on iron chemistry.

■ REFERENCES

- (1) Theil, E. C., and Raymond, K. N. (1994) in *Bioinorganic chemistry* (Bertini, I., Gray, H. B., Lippard, S. J., and Valentine, J. S., Eds.) pp 1–36, University Science Books, Mill Valley, CA.
- (2) Wigglesworth, J. M., and Baum, H. (1980) in *Iron in Biochemistry and Medicine* (Jacobs, A., and Worwood, M., Eds.) Vol. II, pp 29–86, Academic Press, New York.
- (3) Pereira, I. A. C., Teixeira, M., and Xavier, A. V. (2010) in *Bioinorganic chemistry: Trace element evolution from anaerobes to aerobes* (Williams, R. J. P., Ed.) pp 91–190, Springer-Verlag, New York.
- (4) Nielands, J. B. (1995) Siderophores: Structure and functions of microbial iron transport compounds. *J. Biol. Chem.* 27, 26723–26726.
- (5) Hider, R. C., and Kong, X. L. (2010) Chemistry and biology of siderophores. *Nat. Prod. Rep.* 27, 637–657.
- (6) Wang, J., and Pantopoulos, K. (2011) Regulation of cellular iron metabolism. *Biochem. J.* 434, 365–381.
- (7) Hentze, M. W., Muckenthaler, M. U., Galy, B., and Camaschella, C. (2010) Two to tango: Regulation of mammalian iron metabolism. *Cell* 142, 24–38.
- (8) Knutson, M., and Wessling-Resnick, M. (2003) Iron metabolism in the reticuloendothelial system. *Crit. Rev. Biochem. Mol. Biol.* 38, 61–88.
- (9) McKie, A. T. (2008) The role of DcytB in iron metabolism: An update. *Biochem. Soc. Trans.* 36, 1239–1241.
- (10) West, A. R., and Oates, P. S. (2008) Mechanisms of heme iron absorption: Current questions and controversies. *World J. Gastroenterol.* 14, 4101–4110.
- (11) Ryter, S. W., Alam, J., and Choi, A. M. (2006) Heme oxygenase-1/carbon monoxide: From basic science to therapeutic applications. *Physiol. Rev.* 86, 583–650.
- (12) Kovac, S., Anderson, G. J., and Baldwin, G. S. (2011) Gastrins, iron homeostasis and colorectal cancer. *Biochim. Biophys. Acta* 1813, 889–895.
- (13) Gkouvasos, K., Papanikolaou, G., and Pantopoulos, K. (2012) Regulation of iron transport and the role of transferrin. *Biochim. Biophys. Acta* 1820, 188–202.
- (14) Brissot, P., Ropert, M., Le Lan, C., and Loreal, O. (2012) Non-transferrin bound iron: A key role in iron overload and iron toxicity. *Biochim. Biophys. Acta* 1820, 403–410.
- (15) Krause, A., Neitz, S., Magert, H. J., Schulz, A., Forssmann, W. G., Schulz-Knappe, P., and Adermann, K. (2000) LEAP-1, a novel highly disulfide-bonded human peptide, exhibits antimicrobial activity. *FEBS Lett.* 480, 147–150.
- (16) Park, C. H., Valore, E. V., Waring, A. J., and Ganz, T. (2001) Hepcidin, a urinary antimicrobial peptide synthesized in the liver. *J. Biol. Chem.* 276, 7806–7810.
- (17) Nemeth, E., Tuttle, M. S., Powelson, J., Vaughn, M. B., Donovan, A., Ward, D. M., Ganz, T., and Kaplan, J. (2004) Hepcidin regulates cellular iron efflux by binding to ferroportin and inducing its internalization. *Science* 306, 2090–2093.
- (18) De Domenico, I., Ward, D. M., Langelier, C., Vaughn, M. B., Nemeth, E., Sundquist, W. L., Ganz, T., Musci, G., and Kaplan, J. (2007) The molecular mechanism of hepcidin-mediated ferroportin down-regulation. *Mol. Biol. Cell* 18, 2569–2578.

- (19) Brasse-Lagnel, C., Karim, Z., Letteron, P., Bekri, S., Bado, A., and Beaumont, C. (2011) Intestinal DMT1 cotransporter is down-regulated by hepcidin via proteasome internalization and degradation. *Gastroenterology* 140, 1261–1271.
- (20) Weiss, G. (2009) Iron metabolism in the anemia of chronic disease. *Biochim. Biophys. Acta* 1790, 682–693.
- (21) Finberg, K. E., Heeney, M. M., Campagna, D. R., Aydinok, Y., Pearson, H. A., Hartman, K. R., Mayo, M. M., Samuel, S. M., Strouse, J. J., Markianos, K., Andrews, N. C., and Fleming, M. D. (2008) Mutations in *TMPRSS6* cause iron-refractory iron deficiency anemia (IRIDA). *Nat. Genet.* 40, 569–571.
- (22) Ganz, T., and Nemeth, E. (2011) Hepcidin and disorders of iron metabolism. *Annu. Rev. Med.* 62, 347–360.
- (23) Sebastiani, G., and Pantopoulos, K. (2011) Disorders associated with systemic or local iron overload: From pathophysiology to clinical practice. *Metallomics* 3, 971–986.
- (24) Roetto, A., Papanikolaou, G., Politou, M., Alberti, F., Girelli, D., Christakis, J., Loukopoulos, D., and Camaschella, C. (2003) Mutant antimicrobial peptide hepcidin is associated with severe juvenile hemochromatosis. *Nat. Genet.* 33, 21–22.
- (25) Papanikolaou, G., Samuels, M. E., Ludwig, E. H., MacDonald, M. L., Franchini, P. L., Dube, M. P., Andres, L., MacFarlane, J., Sakellaropoulos, N., Politou, M., Nemeth, E., Thompson, J., Risler, J. K., Zaborowska, C., Babakaiff, R., Radomski, C. C., Pape, T. D., Davidas, O., Christakis, J., Brissot, P., Lockitch, G., Ganz, T., Hayden, M. R., and Goldberg, Y. P. (2004) Mutations in *HFE2* cause iron overload in chromosome 1q-linked juvenile hemochromatosis. *Nat. Genet.* 36, 77–82.
- (26) Feder, J. N., Gnirke, A., Thomas, W., Tsuchihashi, Z., Ruddy, D. A., Basava, A., Dormishian, F., Domingo, R., Jr., Ellis, M. C., Fullan, A., Hinton, L. M., Jones, N. L., Kimmel, B. E., Kronmal, G. S., Lauer, P., Lee, V. K., Loeb, D. B., Mapa, F. A., McClelland, E., Meyer, N. C., Mintier, G. A., Moeller, N., Moore, T., Morikang, E., Prass, C. E., Quintana, L., Starnes, S. M., Schatzman, R. C., Brunke, K. J., Drayna, D. T., Risch, N. J., Bacon, B. R., and Wolff, R. K. (1996) A novel MHC class I-like gene is mutated in patients with hereditary haemochromatosis. *Nat. Genet.* 13, 399–408.
- (27) Bridle, K. R., Frazer, D. M., Wilkins, S. J., Dixon, J. L., Purdie, D. M., Crawford, D. H., Subramaniam, V. N., Powell, L. W., Anderson, G. J., and Ram, G. A. (2003) Disrupted hepcidin regulation in HFE-associated haemochromatosis and the liver as a regulator of body iron homeostasis. *Lancet* 361, 669–673.
- (28) Camaschella, C., Roetto, A., Cali, A., De Gobbi, M., Garozzo, G., Carella, M., Majorano, N., Totaro, A., and Gasparini, P. (2000) The gene *TFR2* is mutated in a new type of haemochromatosis mapping to 7q22. *Nat. Genet.* 25, 14–15.
- (29) De Domenico, I., Ward, D. M., Nemeth, E., Vaughn, M. B., Musci, G., Ganz, T., and Kaplan, J. (2005) The molecular basis of ferroportin-linked hemochromatosis. *Proc. Natl. Acad. Sci. U.S.A.* 102, 8955–8960.
- (30) Mayr, R., Griffiths, W. J., Hermann, M., McFarlane, I., Halsall, D. J., Finkenstedt, A., Douds, A., Davies, S. E., Janecke, A. R., Vogel, W., Cox, T. M., and Zoller, H. (2011) Identification of mutations in *SLC40A1* that affect ferroportin function and phenotype of human ferroportin iron overload. *Gastroenterology* 140, 2056–2063.
- (31) Ganz, T. (2011) Hepcidin and iron regulation, 10 years later. *Blood* 117, 4425–4433.
- (32) Valore, E. V., and Ganz, T. (2008) Posttranslational processing of hepcidin in human hepatocytes is mediated by the prohormone convertase furin. *Blood Cells, Mol. Dis.* 40, 132–138.
- (33) Peslova, G., Petrak, J., Kuzelova, K., Hardy, I., Halada, P., Kuchel, P. W., Soe-Lin, S., Ponka, P., Sutak, R., Becker, E., Huang, M. L., Suryo Rahmanto, Y., Richardson, D. R., and Vyoral, D. (2009) Hepcidin, the hormone of iron metabolism, is bound specifically to α -2-macroglobulin in blood. *Blood* 113, 6225–6236.
- (34) Courselaud, B., Pigeon, C., Inoue, Y., Inoue, J., Gonzalez, F. J., Leroyer, P., Gilot, D., Boudjema, K., Guguén-Guillouzo, C., Brissot, P., Loreal, O., and Ilyin, G. (2002) *C/EBP α* regulates hepatic transcription of hepcidin, an antimicrobial peptide and regulator of iron metabolism. Cross-talk between *C/EBP* pathway and iron metabolism. *J. Biol. Chem.* 277, 41163–41170.
- (35) Steinbicker, A. U., Bartnikas, T. B., Lohmeyer, L. K., Leyton, P., Mayeur, C., Kao, S. M., Pappas, A. E., Peterson, R. T., Bloch, D. B., Yu, P. B., Fleming, M. D., and Bloch, K. D. (2011) Perturbation of hepcidin expression by BMP type I receptor deletion induces iron overload in mice. *Blood* 118, 4224–4230.
- (36) Piperno, A., Girelli, D., Nemeth, E., Trombini, P., Bozzini, C., Poggiali, E., Phung, Y., Ganz, T., and Camaschella, C. (2007) Blunted hepcidin response to oral iron challenge in HFE-related hemochromatosis. *Blood* 110, 4096–4100.
- (37) Girelli, D., Trombini, P., Busti, F., Camprostrini, N., Sandri, M., Pelucchi, S., Westerman, M., Ganz, T., Nemeth, E., Piperno, A., and Camaschella, C. (2011) A time course of hepcidin response to iron challenge in patients with HFE and *TFR2* hemochromatosis. *Haematologica* 96, 500–506.
- (38) Gehrke, S. G., Kulaksiz, H., Herrmann, T., Riedel, H. D., Bents, K., Veltkamp, C., and Stremmel, W. (2003) Expression of hepcidin in hereditary hemochromatosis: Evidence for a regulation in response to serum transferrin saturation and non-transferrin-bound iron. *Blood* 102, 371–376.
- (39) Wallace, D. F., Summerville, L., Lusby, P. E., and Subramaniam, V. N. (2005) First phenotypic description of transferrin receptor 2 knockout mouse, and the role of hepcidin. *Gut* 54, 980–986.
- (40) Niederkofler, V., Salie, R., and Arber, S. (2005) Hemojuvelin is essential for dietary iron sensing, and its mutation leads to severe iron overload. *J. Clin. Invest.* 115, 2180–2186.
- (41) Huang, F. W., Pinkus, J. L., Pinkus, G. S., Fleming, M. D., and Andrews, N. C. (2005) A mouse model of juvenile hemochromatosis. *J. Clin. Invest.* 115, 2187–2191.
- (42) Ramos, E., Kautz, L., Rodriguez, R., Hansen, M., Gabayan, V., Ginzburg, Y., Roth, M. P., Nemeth, E., and Ganz, T. (2011) Evidence for distinct pathways of hepcidin regulation by acute and chronic iron loading in mice. *Hepatology* 53, 1333–1341.
- (43) Corradini, E., Rozier, M., Meynard, D., Odhiambo, A., Lin, H. Y., Feng, Q., Migas, M. C., Britton, R. S., Babbitt, J. L., and Fleming, R. E. (2011) Iron regulation of hepcidin despite attenuated *Smad1,5,8* signaling in mice without transferrin receptor 2 or *Hfe*. *Gastroenterology* 141, 1907–1914.
- (44) Babbitt, J. L., Huang, F. W., Wrighting, D. M., Xia, Y., Sidis, Y., Samad, T. A., Campagna, J. A., Chung, R. T., Schneyer, A. L., Woolf, C. J., Andrews, N. C., and Lin, H. Y. (2006) Bone morphogenetic protein signaling by hemojuvelin regulates hepcidin expression. *Nat. Genet.* 38, 531–539.
- (45) Casanovasq, G., Mleczko-Sanecka, K., Altamura, S., Hentze, M. W., and Muckenthaler, M. U. (2009) Bone morphogenetic protein (BMP)-responsive elements located in the proximal and distal hepcidin promoter are critical for its response to *HJV/BMP/SMAD*. *J. Mol. Med.* 87, 471–480.
- (46) Wang, R. H., Li, C., Xu, X., Zheng, Y., Xiao, C., Zervas, P., Cooperman, S., Eckhaus, M., Rouault, T., Mishra, L., and Deng, C. X. (2005) A role of *SMAD4* in iron metabolism through the positive regulation of hepcidin expression. *Cell Metab.* 2, 399–409.
- (47) Mleczko-Sanecka, K., Casanovas, G., Ragab, A., Breitkopf, K., Muller, A., Boutros, M., Dooley, S., Hentze, M. W., and Muckenthaler, M. U. (2010) *SMAD7* controls iron metabolism as a potent inhibitor of hepcidin expression. *Blood* 115, 2657–2665.
- (48) Meynard, D., Kautz, L., Darnaud, V., Canonne-Hergaux, F., Coppin, H., and Roth, M. P. (2009) Lack of the bone morphogenetic protein *BMP6* induces massive iron overload. *Nat. Genet.* 41, 478–481.
- (49) Andriopoulos, B., Jr., Corradini, E., Xia, Y., Faasse, S. A., Chen, S., Grgurevic, L., Knutson, M. D., Pietrangolo, A., Vukicevic, S., Lin, H. Y., and Babbitt, J. L. (2009) *BMP6* is a key endogenous regulator of hepcidin expression and iron metabolism. *Nat. Genet.* 41, 482–487.
- (50) Babbitt, J. L., Huang, F. W., Xia, Y., Sidis, Y., Andrews, N. C., and Lin, H. Y. (2007) Modulation of bone morphogenetic protein signaling in vivo regulates systemic iron balance. *J. Clin. Invest.* 117, 1933–1939.

- (51) Yu, P. B., Hong, C. C., Sachidanandan, C., Babitt, J. L., Deng, D. Y., Hoyng, S. A., Lin, H. Y., Bloch, K. D., and Peterson, R. T. (2008) Dorsomorphin inhibits BMP signals required for embryogenesis and iron metabolism. *Nat. Chem. Biol.* 4, 33–41.
- (52) Lin, L., Goldberg, Y. P., and Ganz, T. (2005) Competitive regulation of hepcidin mRNA by soluble and cell-associated hemojuvelin. *Blood* 106, 2884–2889.
- (53) Chen, W., Huang, F. W., de Renshaw, T. B., and Andrews, N. C. (2011) Skeletal muscle hemojuvelin is dispensable for systemic iron homeostasis. *Blood* 117, 6319–6325.
- (54) Gkouvatso, K., Wagner, J., Papanikolaou, G., Sebastiani, G., and Pantopoulos, K. (2011) Conditional disruption of mouse Hfe2 gene: Maintenance of systemic iron homeostasis requires hepatic but not skeletal muscle hemojuvelin. *Hepatology* 54, 1800–1807.
- (55) Silvestri, L., Pagani, A., Nai, A., De Domenico, I., Kaplan, J., and Camaschella, C. (2008) The serine protease matriptase-2 (TMPRSS6) inhibits hepcidin activation by cleaving membrane hemojuvelin. *Cell Metab.* 8, 502–511.
- (56) Du, X., She, E., Gelbart, T., Truksa, J., Lee, P., Xia, Y., Khovananth, K., Mudd, S., Mann, N., Moresco, E. M., Beutler, E., and Beutler, B. (2008) The serine protease TMPRSS6 is required to sense iron deficiency. *Science* 320, 1088–1092.
- (57) Folgueras, A. R., Martin de Lara, F., Pendas, A. M., Garabaya, C., Rodriguez, F., Astudillo, A., Bernal, T., Cabanillas, R., Lopez-Otin, C., and Velasco, G. (2008) The membrane-bound serine protease matriptase-2 (Tmprss6) is an essential regulator of iron homeostasis. *Blood* 112, 2539–2545.
- (58) Krijt, J., Fujikura, Y., Ramsay, A. J., Velasco, G., and Necas, E. (2011) Liver hemojuvelin protein levels in mice deficient in matriptase-2 (Tmprss6). *Blood Cells, Mol., Dis.* 47, 133–137.
- (59) Meynard, D., Vaja, V., Sun, C. C., Corradini, E., Chen, S., Lopez-Otin, C., Grgurevic, L., Hong, C. C., Stirnberg, M., Gutschow, M., Vukicevic, S., Babitt, J. L., and Lin, H. Y. (2011) Regulation of TMPRSS6 by BMP6 and iron in human cells and mice. *Blood* 118, 747–756.
- (60) Vujic Spasic, M., Kiss, J., Herrmann, T., Galy, B., Martinache, S., Stolte, J., Grone, H. J., Stremmel, W., Hentze, M. W., and Muckenthaler, M. U. (2008) Hfe acts in hepatocytes to prevent hemochromatosis. *Cell Metab.* 7, 173–178.
- (61) Wallace, D. F., Summerville, L., and Subramaniam, V. N. (2007) Targeted disruption of the hepatic transferrin receptor 2 gene in mice leads to iron overload. *Gastroenterology* 132, 301–310.
- (62) van Dijk, B. A., Laarakkers, C. M., Klaver, S. M., Jacobs, E. M., van Tits, L. J., Janssen, M. C., and Swinkels, D. W. (2008) Serum hepcidin levels are innately low in HFE-related haemochromatosis but differ between C282Y-homozygotes with elevated and normal ferritin levels. *Br. J. Haematol.* 142, 979–985.
- (63) Zimmermann, M. B., Troesch, B., Biebinger, R., Egli, I., Zeder, C., and Hurrell, R. F. (2009) Plasma hepcidin is a modest predictor of dietary iron bioavailability in humans, whereas oral iron loading, measured by stable-isotope appearance curves, increases plasma hepcidin. *Am. J. Clin. Nutr.* 90, 1280–1287.
- (64) Lebrón, J. A., Bennet, M. J., Vaughn, D. E., Chirino, A. J., Snow, P. M., Mintier, G. A., Feder, J. N., and Bjorkman, P. J. (1998) Crystal structure of the hemochromatosis protein HFE and characterization of its interaction with transferrin receptor. *Cell* 93, 111–123.
- (65) Schmidt, P. J., Toran, P. T., Giannetti, A. M., Bjorkman, P. J., and Andrews, N. C. (2008) The transferrin receptor modulates hfe-dependent regulation of hepcidin expression. *Cell Metab.* 7, 205–214.
- (66) West, A. P., Jr., Giannetti, A. M., Herr, A. B., Bennett, M. J., Nangiana, J. S., Pierce, J. R., Weiner, L. P., Snow, P. M., and Bjorkman, P. J. (2001) Mutational analysis of the transferrin receptor reveals overlapping HFE and transferrin binding sites. *J. Mol. Biol.* 313, 385–397.
- (67) Chen, J., Chloupkova, M., Gao, J., Chapman-Arvedson, T. L., and Enns, C. A. (2007) HFE modulates transferrin receptor 2 levels in hepatoma cells via interactions that differ from transferrin receptor 1-HFE interactions. *J. Biol. Chem.* 282, 36862–36870.
- (68) Giannetti, A. M., and Bjorkman, P. J. (2004) HFE and transferrin directly compete for transferrin receptor in solution and at the cell surface. *J. Biol. Chem.* 279, 25866–25875.
- (69) Goswami, T., and Andrews, N. C. (2006) Hereditary hemochromatosis protein, HFE, interaction with transferrin receptor 2 suggests a molecular mechanism for mammalian iron sensing. *J. Biol. Chem.* 281, 28494–28498.
- (70) Johnson, M. B., and Enns, C. A. (2004) Diferric transferrin regulates transferrin receptor 2 protein stability. *Blood* 104, 4287–4293.
- (71) Robb, A., and Wessling-Resnick, M. (2004) Regulation of transferrin receptor 2 protein levels by transferrin. *Blood* 104, 4294–4299.
- (72) Pietrangolo, A. (2010) Hereditary hemochromatosis: Pathogenesis, diagnosis, and treatment. *Gastroenterology* 139, 393–408.
- (73) Wallace, D. F., Summerville, L., Crampton, E. M., Frazer, D. M., Anderson, G. J., and Subramaniam, V. N. (2009) Combined deletion of Hfe and transferrin receptor 2 in mice leads to marked dysregulation of hepcidin and iron overload. *Hepatology* 50, 1992–2000.
- (74) Ramey, G., Deschemin, J. C., and Vaulont, S. (2009) Cross-talk between the mitogen activated protein kinase and bone morphogenetic protein/hemojuvelin pathways is required for the induction of hepcidin by holotransferrin in primary mouse hepatocytes. *Haematologica* 94, 765–772.
- (75) Poli, M., Lusciati, S., Gandini, V., Maccarinelli, F., Finazzi, D., Silvestri, L., Roetto, A., and Arosio, P. (2010) Transferrin receptor 2 and HFE regulate furin expression via mitogen-activated protein kinase/extracellular signal-regulated kinase (MAPK/Erk) signaling. Implications for transferrin-dependent hepcidin regulation. *Haematologica* 95, 1832–1840.
- (76) Ryan, J. D., Ryan, E., Fabre, A., Lawless, M. W., and Crowe, J. (2010) Defective bone morphogenic protein signaling underlies hepcidin deficiency in HFE hereditary hemochromatosis. *Hepatology* 52, 1266–1273.
- (77) Wrighting, D. M., and Andrews, N. C. (2006) Interleukin-6 induces hepcidin expression through STAT3. *Blood* 108, 3204–3209.
- (78) Verga Falzacappa, M. V., Vujic Spasic, M., Kessler, R., Stolte, J., Hentze, M. W., and Muckenthaler, M. U. (2007) STAT3 mediates hepatic hepcidin expression and its inflammatory stimulation. *Blood* 109, 353–358.
- (79) Pietrangolo, A., Dierssen, U., Valli, L., Garuti, C., Rump, A., Corradini, E., Ernst, M., Klein, C., and Trautwein, C. (2007) STAT3 is required for IL-6-gp130-dependent activation of hepcidin *in vivo*. *Gastroenterology* 132, 294–300.
- (80) Pak, M., Lopez, M. A., Gabayan, V., Ganz, T., and Rivera, S. (2006) Suppression of hepcidin during anemia requires erythropoietic activity. *Blood* 108, 3730–3735.
- (81) Vokurka, M., Krijt, J., Sulc, K., and Necas, E. (2006) Hepcidin mRNA levels in mouse liver respond to inhibition of erythropoiesis. *Physiol. Res.* 55, 667–674.
- (82) Tanno, T., Bhanu, N. V., Oneal, P. A., Goh, S. H., Staker, P., Lee, Y. T., Moroney, J. W., Reed, C. H., Luban, N. L., Wang, R. H., Eling, T. E., Childs, R., Ganz, T., Leitman, S. F., Fucharoen, S., and Miller, J. L. (2007) High levels of GDF15 in thalassemia suppress expression of the iron regulatory protein hepcidin. *Nat. Med.* 13, 1096–1101.
- (83) Tanno, T., Porayette, P., Sripichai, O., Noh, S. J., Byrnes, C., Bhupatiraju, A., Lee, Y. T., Goodnough, J. B., Harandi, O., Ganz, T., Paulson, R. F., and Miller, J. L. (2009) Identification of TWSG1 as a second novel erythroid regulator of hepcidin expression in murine and human cells. *Blood* 114, 181–186.
- (84) Santini, V., Girelli, D., Sanna, A., Martinelli, N., Duca, L., Campostri, N., Cortelezzi, A., Corbella, M., Bosi, A., Reda, G., Olivieri, O., and Cappellini, M. D. (2011) Hepcidin levels and their determinants in different types of myelodysplastic syndromes. *PLoS One* 6, e23109.
- (85) Papanikolaou, G., Tzilianos, M., Christakis, J. I., Bogdanos, D., Tsimirika, K., MacFarlane, J., Goldberg, Y. P., Sakellaropoulos, N.,

- Ganz, T., and Nemeth, E. (2005) Hepcidin in iron overload disorders. *Blood* 105, 4103–4105.
- (86) Kattamis, A., Pappasotiropoulou, I., Palaologou, D., Apostolou, F., Galani, A., Ladis, V., Sakellaropoulos, N., and Papanikolaou, G. (2006) The effects of erythropoietic activity and iron burden on hepcidin expression in patients with thalassemia major. *Haematologica* 91, 809–812.
- (87) Peyssonnaud, C., Zinkernagel, A. S., Schuepbach, R. A., Rankin, E., Vaulont, S., Haase, V. H., Nizet, V., and Johnson, R. S. (2007) Regulation of iron homeostasis by the hypoxia-inducible transcription factors (HIFs). *J. Clin. Invest.* 117, 1926–1932.
- (88) Volke, M., Gale, D. P., Maegdefrau, U., Schley, G., Klanke, B., Bosserhoff, A. K., Maxwell, P. H., Eckardt, K. U., and Warnecke, C. (2009) Evidence for a lack of a direct transcriptional suppression of the iron regulatory peptide hepcidin by hypoxia-inducible factors. *PLoS One* 4, e7875.
- (89) Mastrogiannaki, M., Matak, P., Mathieu, J. R., Delga, S., Mayeux, P., Vaulont, S., and Peyssonnaud, C. (2012) Hepatic HIF-2 down-regulates hepcidin expression in mice through epo-mediated increase in erythropoiesis. *Haematologica* 97, 827–834.
- (90) Chaston, T. B., Patak, P., Pourvali, K., Srari, S. K., McKie, A. T., and Sharp, P. A. (2011) Hypoxia inhibits hepcidin expression in HuH7 hepatoma cells via decreased SMAD4 signaling. *Am. J. Physiol.* 300, C888–C895.
- (91) Shah, Y. M., Matsubara, T., Ito, S., Yim, S. H., and Gonzalez, F. (2009) Intestinal Hypoxia-Inducible Transcription Factors Are Essential for Iron Absorption following Iron Deficiency. *Cell Metab.* 9, 152–164.
- (92) Mastrogiannaki, M., Matak, P., Keith, B., Simon, M. C., Vaulont, S., and Peyssonnaud, C. (2009) HIF-2 α , but not HIF-1 α , promotes iron absorption in mice. *J. Clin. Invest.* 119, 1159–1166.
- (93) Vanoaica, L., Darshan, D., Richman, L., Schumann, K., and Kuhn, L. C. (2010) Intestinal ferritin H is required for an accurate control of iron absorption. *Cell Metab.* 12, 273–282.
- (94) Ludwiczek, S., Aigner, E., Theurl, I., and Weiss, G. (2003) Cytokine-mediated regulation of iron transport in human monocytic cells. *Blood* 101, 4148–4154.
- (95) Paradkar, P. N., and Roth, J. A. (2007) Expression of the 1B isoforms of divalent metal transporter (DMT1) is regulated by interaction of NF-Y with a CCAAT-box element near the transcription start site. *J. Cell. Physiol.* 211, 183–188.
- (96) Gunshin, H., Allerson, C. R., Polycarpou-Schwarz, M., Rofts, A., Rogers, J. T., Kishi, F., Hentze, M. W., Rouault, T. A., Andrews, N., and Hediger, M. A. (2001) Iron-dependent regulation of the divalent metal ion transporter. *FEBS Lett.* 509, 309–316.
- (97) Lymboussaki, A., Pignatti, E., Montosi, G., Garuti, C., Haile, D. J., and Pietrangelo, A. (2003) The role of the iron responsive element in the control of ferroportin1/IREG1/MTP1 gene expression. *J. Hepatol.* 39, 710–715.
- (98) Pietrangelo, A., Caleffi, A., Henrion, J., Ferrara, F., Corradini, E., Kulaksiz, H., Stremmel, W., Andreone, P., and Garuti, C. (2005) Juvenile hemochromatosis associated with pathogenic mutations of adult hemochromatosis genes. *Gastroenterology* 128, 470–479.
- (99) Aisen, P. (1998) Transferrin, the transferrin receptor, and the uptake of iron by cells. *Met. Ions Biol. Syst.* 35, 585–631.
- (100) Andrews, N. C. (2000) Iron homeostasis: Insights from genetics and animal models. *Nat. Rev. Genet.* 1, 208–217.
- (101) Aisen, P. (2004) Transferrin receptor 1. *Int. J. Biochem. Cell Biol.* 36, 2137–2143.
- (102) Dautry-Varsat, A., Ciechanover, A., and Lodish, H. F. (1983) pH and the recycling of transferrin during receptor-mediated endocytosis. *Proc. Natl. Acad. Sci. U.S.A.* 80, 2258–2262.
- (103) Bali, P. K., Zak, O., and Aisen, P. (1991) A new role for the transferrin receptor in the release of iron from transferrin. *Biochemistry* 30, 324–328.
- (104) Ohgami, R. S., Campagna, D. R., McDonald, A., and Fleming, M. D. (2006) The Steap proteins are metallo-reductases. *Blood* 108, 1388–1394.
- (105) Fleming, M. D., Tremor, C. C., III, Su, M. A., Foernzler, D., Beier, D. R., Dietrich, W. F., and Andrews, N. C. (1997) Microcytic anaemia mice have a mutation in Nramp2, a candidate iron transporter gene. *Nat. Genet.* 16, 383–386.
- (106) Fleming, M. D., Romano, M. A., Su, M. A., Garrick, M. L., Garrick, M. D., and Andrews, N. C. (1998) Nramp2 is mutated in anemia Belgrade (b) rat: Evidence for a role for Nramp2 in endosomal iron transport. *Proc. Natl. Acad. Sci. U.S.A.* 95, 1148–1153.
- (107) Gunshin, H., Mackenzie, B., Berger, U. V., Gunshin, Y., Romero, M. F., Boron, W. F., Nussberger, S., Gollan, J. L., and Hediger, M. A. (1997) Cloning and characterization of a mammalian proton-coupled metal-ion transporter. *Nature* 388, 482–488.
- (108) Gunshin, H., Fujiwara, Y., Custodio, A. O., Drenzo, C., Robine, S., and Andrews, N. C. (2005) Slx11a2 is required for intestinal iron absorption and erythropoiesis but dispensable in placenta and liver. *J. Clin. Invest.* 115, 1258–1266.
- (109) Mims, M. P., Guan, Y., Pospisilova, D., Priwitzerova, M., Indra, K., Ponka, P., Divoky, Y., and Prchal, J. T. (2005) Identification of a human mutation of DMT1 in a patient with microcytic anemia and iron overload. *Blood* 105, 1337–1342.
- (110) Ohgami, R. S., Campagna, D. R., Greer, E. L., Antiochos, B., McDonald, A., Chen, J., Sharp, J. J., Fujiwara, Y., Barker, J. E., and Fleming, M. D. (2005) Identification of a ferrioreductase required for efficient transferrin-dependent iron uptake in erythroid cells. *Nat. Genet.* 37, 1264–1269.
- (111) Ohgami, R. S., Campagna, D. R., Antiochos, B., Wood, E. B., Sharp, J. J., Barker, J. E., and Fleming, M. D. (2005) Nm1054: A spontaneous, recessive, hypochromic, microcytic anemia mutation in the mouse. *Blood* 106, 3625–3631.
- (112) Lambe, T., Simpson, R. J., Dawson, S., Bouriez-Jones, T., Crockford, T. L., Lephherd, M., Latunde-Dada, G. O., Robinson, H., Raja, K. B., Campagna, D. R., Villarreal, G., Jr., Ellroy, J. C., Goodnow, C. C., Fleming, M. D., McKie, A. T., and Cornall, R. J. (2009) Identification of Steap3 endosomal targeting motif essential for normal iron metabolism. *Blood* 113, 1805–1808.
- (113) Levy, J. E., Jin, O., Fujiwara, Y., Kuo, F., and Andrews, N. C. (1999) Transferrin receptor is essential for development of erythrocytes and the nervous system. *Nat. Genet.* 21, 396–399.
- (114) Larrick, J., and Hyman, E. (1984) Acquired iron-deficiency anemia caused by an antibody against the transferrin receptor. *N. Engl. J. Med.* 311, 214–218.
- (115) Kawabata, H., Yang, R., Hiramata, T., Vuong, P. T., Kawano, S., Gombart, A. F., and Koeffler, H. P. (1999) Molecular cloning of transferrin receptor 2. A new member of the transferrin receptor-like family. *J. Biol. Chem.* 274, 20826–20832.
- (116) West, A. P., Jr., Bennett, M. J., Sellers, V. M., Andrews, N. C., Enns, C. A., and Bjorkman, P. J. (2000) Comparisons of the interactions of transferrin receptor with transferrin and hereditary hemochromatosis protein HFE. *J. Biol. Chem.* 275, 38135–38138.
- (117) Johnson, M. B., and Enns, C. A. (2004) Differic transferrin regulates transferrin receptor 2 protein stability. *Blood* 104, 4287–4293.
- (118) Robb, A., and Wessling-Resnick, M. (2004) Regulation of transferrin receptor 2 protein levels by transferrin. *Blood* 104, 4294–4299.
- (119) Kawabata, H., Fleming, R. E., Gui, D., Moon, S. Y., Saitoh, T., O'Kelly, J., Umehara, Y., Wano, Y., Said, J. W., and Koeffler, H. P. (2005) Expression of hepcidin is down regulated in TfR2 mutant mice manifesting a phenotype of hereditary hemochromatosis. *Blood* 105, 376–381.
- (120) Wallace, D. F., Summerville, L., and Subramaniam, V. N. (2007) Targeted disruption of the hepatic transferrin receptor 2 gene in mice leads to iron overload. *Gastroenterology* 132, 301–310.
- (121) Breuer, W., Hershko, C., and Cabantchik, Z. I. (2000) The importance of non-transferrin bound iron in disorders of iron metabolism. *Transfus. Sci.* 23, 185–192.
- (122) Yang, J., Goetz, D., Li, Y.-Y., Wang, W., Mori, K., Setlik, D., Du, T., Erdjument-Bromage, H., Tempst, P., Strong, R., and Barasch, J.

- (2002) An iron delivery pathway mediated by a lipocalin. *Mol. Cell* 10, 1045–1056.
- (123) Yang, J., Mori, K., Li, J. Y., and Barasch, J. (2003) Iron, lipocalin, and kidney epithelia. *Am. J. Physiol.* 285, F9–F18.
- (124) Flo, T. H., Smith, K. D., Sato, S., Rodriguez, D. J., Holmes, M. A., Strong, R. K., Akira, S., and Aderem, A. (2004) Lipocalin 2 mediates an innate immune response to bacterial infection by sequestering iron. *Nature* 432, 917–921.
- (125) Berger, T., Togawa, A., Duncan, G. S., Elia, A. J., You-Ten, A., Wakeham, A., Fong, H. E., Cheung, C. C., and Mak, T. W. (2006) Lipocalin-2-deficient mice exhibit increased sensitivity to *Escherichia coli* infection but not to ischemia-reperfusion injury. *Proc. Natl. Acad. Sci. U.S.A.* 103, 1834–1839.
- (126) Liu, Z., Yang, A., Wang, Z., Bunting, K., Davuluri, G., Green, M. R., and Devireddy, L. R. (2011) Multiple apoptotic defects in hematopoietic cells from mice lacking lipocalin 24p3. *J. Biol. Chem.* 286, 20606–20614.
- (127) Huang, H., Akira, S., and Santos, M. M. (2009) Is the iron donor lipocalin 2 implicated in the pathophysiology of hereditary hemochromatosis? *Hepatology* 49, 1012–1016.
- (128) Collins, J. F., Franck, C. A., Kowdley, K. A., and Ghishan, F. K. (2005) Identification of differentially expressed genes in response to dietary iron deprivation in rat duodenum. *Am. J. Physiol.* 288, G964–G971.
- (129) Shindo, M., Torimoto, Y., Saito, H., Motomura, W., Ikuta, K., Sato, K., Fujimoto, Y., and Kohgo, Y. (2006) Functional role of DMT1 in transferrin-independent iron uptake by human hepatocyte and hepatocellular carcinoma cell, HLF. *Hepatol. Res.* 35, 152–162.
- (130) Xu, H., Jin, J., DeFelice, J. L., Andrews, N. C., and Clapham, D. E. (2004) A spontaneous, recurrent mutation in divalent metal transporter-1 exposes a calcium entry pathway. *PLoS Biol.* 2, 0378–0385.
- (131) Liuzzi, J. P., Aydemir, F., Nam, H., Knutson, M. D., and Cousins, R. J. (2006) Zip14 (Slc39a14) mediates non-transferrin-bound iron uptake into cells. *Proc. Natl. Acad. Sci. U.S.A.* 103, 13612–13617.
- (132) Gao, J., Zhao, N., Knutson, M. D., and Enns, C. A. (2008) The hereditary hemochromatosis protein, HFE, inhibits iron uptake via down-regulation of Zip14 in HepG2 cells. *J. Biol. Chem.* 283, 21462–21468.
- (133) Hojyo, S., Fukada, T., Shimoda, S., Ohasi, W., Bin, B.-H., Koseki, H., and Hirano, T. (2011) The zinc transporter Slc39a14/Zip14 controls G-protein coupled receptor-mediated signaling required for systemic growth. *PLoS One* 6, e18059.
- (134) Tsushima, R. G., Wickenden, A. D., Bouchard, R. A., Oudit, G. Y., Liu, P. P., and Backx, P. H. (1999) Modulation of iron uptake in heart by L-type Ca²⁺ channel modifiers: Possible implications in iron overload. *Circ. Res.* 84, 1302–1309.
- (135) Oudit, G. Y., Sun, H., Triveri, M. G., Koch, S. E., Dawood, F., Ackerley, C., Yazdanpanah, M., Wilson, G. J., Schwartz, A., Liu, P. P., and Backx, P. H. (2003) L-type Ca²⁺ channels provide a major pathway for iron entry into cardiomyocytes in iron-overload cardiomyopathy. *Nat. Med.* 9, 1187–1194.
- (136) Ludwiczek, S., Theurl, I., Muckenthaler, M. U., Jakab, M., Nair, S. M., Theurl, M., Kiss, J., Paulmichl, M., Hentze, M. W., Ritter, M., and Weiss, G. (2007) Ca²⁺ channel blockers reverse iron overload by a new mechanism via divalent metal transporter-1. *Nat. Med.* 13, 448–454.
- (137) Mackenzie, B., Shawki, A., Ghio, A. J., Stonehuerner, J. D., Zhao, L., Ghadersohi, S., Garrick, L. M., and Garrick, M. D. (2010) Calcium channel blockers do not affect iron transport mediated by divalent metal-ion transporter-1. *Blood* 115, 4148–4149.
- (138) Moosmang, M., Lenhardt, P., Halder, N., Hoffmann, F., and Wegener, J. (2005) Mouse models to study L-type calcium channel function. *Pharmacol. Ther.* 106, 347–355.
- (139) Chen, T. T., Li, L., Chung, D. H., Allen, C. D., Torti, S. V., Torti, F., Cyster, J. G., Che, C. Y., Brodsky, F. M., Niemi, E. C., Nakamura, M. C., Seaman, W. E., and Daws, M. R. (2005) Tim-2 is expressed on B cells and in liver and kidney and is a receptor for H-ferritin endocytosis. *J. Exp. Med.* 202, 955–965.
- (140) Li, J. Y., Paragas, N., Ned, R. M., Qiu, A., Viltard, M., Leete, T., Drexler, I. R., Chen, X., Sanna-Cherchi, S., Mohammed, F., Williams, D., Lin, C. S., Schmidt-Ott, K. M., Andrews, N. C., and Barasch, J. (2009) Scara5 is a ferritin receptor mediating non-transferrin iron delivery. *Dev. Cell* 16, 35–46.
- (141) Rennert, P. D., Ichimura, T., Sizing, I. D., Bailly, V., Li, Z., Rennard, R., McCoon, P., Pablo, L., Miklasz, S., Tarilonte, L., and Bonventre, J. V. (2006) T cell, Ig domain, mucin domain-2 gene-deficient mice reveal a novel mechanism for the regulation of Th2 immune responses and airway inflammation. *J. Immunol.* 177, 4311–4321.
- (142) Huang, J., Zheng, D.-L., Qin, F.-S., Cheng, N., Chen, H., Wan, B.-B., Wang, Y.-P., Xiao, H.-S., and Han, Z.-G. (2010) Genetic and epigenetic silencing of Scara5 may contribute to human hepatocellular carcinoma activating FAK signaling. *J. Clin. Invest.* 120, 223–241.
- (143) Shayegi, M., Latunde-Dada, G. O., Oakhill, J. S., Laftah, A. H., Takeuchi, K., Halliday, N., Khan, Y., Warley, A., McCann, F. E., Hider, R. C., Frazer, D. M., Anderson, G. J., Vulpe, C. D., Simpson, R. J., and McKie, A. T. (2005) Identification of an intestinal heme transporter. *Cell* 122, 789–801.
- (144) Qiu, A. D., Jansen, M., Sakaris, A., Min, S. H., Chattopadhyay, S., Tsai, E., Sandoval, C., Zhao, R. B., Akabas, M. H., and Goldman, I. D. (2006) Identification of an intestinal folate transporter and the molecular basis for hereditary folate malabsorption. *Cell* 127, 917–928.
- (145) Mims, M. P., and Prchal, J. T. (2005) Divalent metal transporter 1. *Hematology* 10, 339–345.
- (146) Dong, X.-P., Cheng, X., Mills, E., Delling, M., Wang, F., Kurz, T., and Xu, H. (2008) The type IV mucopolidosis-associated protein TRPML1 is an endolysosomal iron release channel. *Nature* 455, 992–996.
- (147) Rajagopal, A., Rao, A. U., Amigo, J., Tian, M., Upadhyay, S. K., Hall, C., Uhm, S., Mathew, M. K., Fleming, M. D., Paw, B. H., Krause, M., and Hamza, I. (2008) Haem homeostasis is regulated by regulated by the conserved and concerted functions of HRG-1 proteins. *Nature* 453, 1127–1131.
- (148) Kruszewski, M. (2003) Labile iron pool: The main determinant of cellular response to oxidative stress. *Mutat. Res.* 531, 81–92.
- (149) Petrat, F., de Groot, H., Sustmann, R., and Rauen, U. (2002) The chelatable iron pool in living cells: A methodically defined quantity. *Biol. Chem.* 383, 489–502.
- (150) Glickstein, H., Ben El, R., Shvartsman, M., and Cabantchik, Z. I. (2005) Intracellular labile iron pool as direct targets of iron chelators: A fluorescence study of chelator action in living cells. *Blood* 106, 3242–3250.
- (151) Meneghini, R. (1997) Iron homeostasis, oxidative stress, and DNA damage. *Free Radical Biol. Med.* 23, 783–792.
- (152) Devireddy, L. R., Gazin, C., Zhu, X., and Green, M. R. (2005) A cell surface receptor for lipocalin 24p3 selectively mediates apoptosis and iron uptake. *Cell* 123, 1293–1305.
- (153) Richardson, D. R. (2005) 24p3 and its receptor: Dawn of a new iron age? *Cell* 123, 1175–1177.
- (154) Richardson, D. R., Lane, D. J., Becker, E. M., Huang, M. L., Whitnall, M., Rahmanto, Y. S., Sheftel, A. D., and Ponka, P. (2010) Mitochondrial iron trafficking and the integration of iron metabolism between the mitochondrion and cytosol. *Proc. Natl. Acad. Sci. U.S.A.* 107, 10775–10782.
- (155) Fernandez-Pol, J. A. (1977) Isolation and characterization of a siderophore-like growth factor from mutants of SV40-transformed cells adapted to picolinic acid. *Cell* 14, 489–499.
- (156) Jones, R., Peterson, C., Grady, R., and Cerami, A. (1980) Low molecular weight iron-binding factor from mammalian tissue that potentiates bacterial growth. *J. Exp. Med.* 151, 418–428.
- (157) Flower, D. R. (2000) Beyond the superfamily: The lipocalin receptors. *Biochim. Biophys. Acta* 1482, 327–336.
- (158) Goetz, D., Holmes, M. A., Borregaard, N., Bluhm, M. E., Raymond, K. N., and Strong, R. K. (2002) The neutrophil lipocalin

NGAL is a bacteriostatic agent that interferes with siderophore-mediated iron acquisition. *Mol. Cell* 10, 1033–1043.

(159) Fischbach, M. A., Lin, H. N., Liu, D. R., and Walsh, C. T. (2006) How pathogenic bacteria evade mammalian sabotage in the battle for iron? *Nat. Chem. Biol.* 2, 132–138.

(160) Devireddy, L. R., Hart, D. O., Goetz, D. H., and Green, M. R. (2010) A mammalian siderophore synthesized by an enzyme with a bacterial homolog involved in enterobactin production. *Cell* 141, 1006–1017.

(161) Crosa, J. H., and Walsh, C. T. (2002) Genetics and assembly line enzymology of siderophore biosynthesis in bacteria. *Microbiol. Mol. Biol. Rev.* 66, 223–249.

(162) Raymond, K. N., Dertz, E. A., and Kim, S. S. (2003) Enterobactin: An archetype for microbial iron transport. *Proc. Natl. Acad. Sci. U.S.A.* 100, 3584–3588.

(163) Muhlenhoff, U., Molik, S., Godoy, J. R., Uzarska, M. A., Richter, N., Seubert, A., Zhang, Y., Stubbe, J., Pierrel, F., Herrero, E., Lillig, C. H., and Lill, R. (2010) Cytosolic monothiol glutaredoxins function in intracellular iron sensing and trafficking via their bound iron-sulfur cluster. *Cell Metab.* 12, 373–385.

(164) Nilsson, R., Schultz, I. J., Pierce, E. L., Soltis, K. A., Naranatarat, A., Ward, D. M., Baughman, J. M., Paradkar, P. N., Kingsley, P. D., Culotta, V. C., Kaplan, J., Palis, J., Paw, B. H., and Mootha, V. K. (2009) Discovery of genes essential for heme biosynthesis through large-scale gene expression analysis. *Cell Metab.* 10, 119–130.

(165) Shaw, G. C., Cope, J. J., Li, L., Corson, K., Hersey, C., Ackerman, G. E., Gwynn, B., Lambert, A. J., Wingert, R. A., Traver, D., Trede, N. S., Barut, B. A., Zhou, Y., Minet, E., Donovan, A., Brownlie, A., Balzan, R., Weiss, M. J., Peters, L. L., Kaplan, J., Zon, L. I., and Paw, B. H. (2006) Mitoferrin is essential for erythroid iron assimilation. *Nature* 440, 96–100.

(166) Chen, W., Paradkar, P. N., Li, L., Pierce, E. L., Langer, N. B., Takahasi-Makise, N., Hyde, B. B., Shirihai, O. S., Ward, D. M., Kaplan, J., and Paw, B. H. (2009) Abcb10 physically interacts with Mitoferrin-1 (Slc25a37) to enhance its stability and function in the erythroid mitochondria. *Proc. Natl. Acad. Sci. U.S.A.* 106, 16263–16268.

(167) Paradkar, P. N., Zumbrennen, K. B., Paw, B. H., Ward, D. M., and Kaplan, J. (2009) Regulation of mitochondrial iron import through differential turnover of mitoferrin 1 and mitoferrin 2. *Mol. Cell Biol.* 29, 1007–1016.

(168) Troadec, M.-B., Warner, D., Wallace, J., Thomas, K., Spangrude, G. J., Phillips, J., Khalimonchuk, O., Paw, B. H., Ward, D. M., and Kaplan, J. (2011) Targeted deletion of the mouse Mitoferrin1 gene: From anemia to protoporphyria. *Blood* 117, 5494–5502.

(169) Zhang, A. S., Sheftel, A. D., and Ponka, P. (2005) Intracellular kinetics of iron in reticulocytes: Evidence for endosome involvement in iron targeting to mitochondria. *Blood* 105, 368–375.

(170) Galy, B., Ferring-Appel, D., Sauer, S. W., Kaden, S., Lyoumi, S., Puy, H., Kolker, S., Grone, H. J., and Hentze, M. W. (2010) Iron regulatory proteins secure mitochondrial iron sufficiency and function. *Cell Metab.* 12, 194–201.

(171) Ajioka, R. S., Phillips, J. D., and Kushner, J. P. (2006) Biosynthesis of heme in mammals. *Biochim. Biophys. Acta* 1763, 723–726.

(172) Sheftel, A. D., Richardson, D. R., Prchal, J., and Ponka, P. (2009) Mitochondrial iron metabolism and sideroblastic anemia. *Acta Haematol.* 122, 120–133.

(173) Krishnamurthy, P. C., Du, G., Fukuda, Y., Sun, D., Sampath, J., Mercer, K. E., Wang, J., Sosa-Pineda, B., Murti, K. G., and Schuetz, J. D. (2006) Identification of a mammalian mitochondrial porphyrin transporter. *Nature* 443, 586–589.

(174) Rufenacht, U., Gregor, A., Gouya, L., Tarczynska-Nosal, S., Schneider-Yin, X., and Deybach, J.-C. (2001) New missense mutation in the human ferrochelatase gene in a family with erythropoietic protoporphyria: Functional studies and correlation of genotype and phenotype. *Clin. Chem.* 47, 1112–1113.

(175) Tong, W. H., and Rouault, T. A. (2006) Functions of mitochondrial ISCU and cytosolic ISCU in mammalian iron-sulfur cluster biogenesis and iron homeostasis. *Cell Metab.* 3, 199–210.

(176) Stemmler, T. L., Lesuisse, E., Pain, D., and Dancis, A. (2010) Frataxin and mitochondrial FeS cluster biogenesis. *J. Biol. Chem.* 285, 26737–26743.

(177) Puccio, H. (2009) Multicellular models of Friedreich ataxia. *J. Neurol.* 256, 18–24.

(178) Lill, R., and Muhlenhoff, U. (2008) Maturation of iron-sulfur proteins in eukaryotes: Mechanisms, connected process, and diseases. *Annu. Rev. Biochem.* 77, 669–700.

(179) Kispal, G., Csere, P., Prohl, C., and Lill, R. (1999) The mitochondrial proteins Atm1p and Nfs1p are essential for biogenesis of cytosolic Fe/S proteins. *EMBO J.* 18, 3981–3989.

(180) Ponderre, C., Antiochos, B. B., Campagna, D. R., Clarke, S. L., Greer, E. L., Deck, K. M., McDonald, A., Han, A.-P., Medlock, A., Kutok, J. L., Anderson, S. M., Eisenstein, R. S., and Fleming, M. D. (2006) A mitochondrial ATP-binding cassette transporter Abcb7 is essential in mice and participates in cytosolic iron-sulfur cluster biogenesis. *Hum. Mol. Genet.* 15, 953–964.

(181) Napier, I., Ponka, P., and Richardson, D. R. (2005) Iron trafficking in the mitochondrion: Novel pathways revealed by disease. *Blood* 105, 1867–1874.

(182) Allikmets, R., Raskind, W. H., Hutchinson, A., Schueck, N. D., Dean, M., and Koeller, D. M. (1999) Mutation of a putative mitochondrial iron transporter gene (ABC7) in X-linked sideroblastic anemia and ataxia (XLSA/A). *Hum. Mol. Genet.* 8, 743–749.

(183) Piccinelli, P., and Samuelsson, T. (2007) Evolution of the iron-responsive element. *RNA* 13, 952–966.

(184) Roetto, A., Bosio, S., Gramaglia, E., Barilaro, M. R., Zecchina, G., and Camaschella, C. (2002) Pathogenesis of hyperferritinemia cataract syndrome. *Blood Cells, Mol. Dis.* 29, 532–535.

(185) Arosio, P., and Levi, S. (2010) Cytosolic and mitochondrial ferritins in the regulation of cellular iron homeostasis and oxidative damage. *Biochim. Biophys. Acta* 1800, 783–792.

(186) Zhang, D. L., Hughes, R. M., Ollivierre-Wilson, H., Ghosh, M. C., and Rouault, T. A. (2009) A ferroportin transcript that lacks an iron-responsive element enables duodenal and erythroid precursor cells to evade translational repression. *Cell Metab.* 9, 461–473.

(187) McKie, A. T., Marciani, P., Rolfs, A., Brennan, K., Wehr, K., Barrow, D., Miret, S., Bomford, A., Peters, T. J., Farzaneh, F., Hediger, M. A., Hentze, M. W., and Simpson, R. J. (2000) A novel duodenal iron-regulated transporter IREG1, implicated in the basolateral transfer of iron to the circulation. *Mol. Cell* 5, 299–309.

(188) Schranzhofer, M., Schiffrer, M., Cabrera, J. A., Kopp, S., Chiba, P., Beug, H., and Mullner, E. W. (2006) Remodeling the regulation of iron metabolism during erythroid differentiation to ensure efficient heme biosynthesis. *Blood* 107, 4159–4167.

(189) Lok, C. N., and Ponka, P. (2000) Identification of an erythroid active element in the transferrin receptor gene. *J. Biol. Chem.* 275, 24185–24190.

(190) Vashisht, A. A., Zumbrennen, K. B., Huang, X., Powers, D. N., Durazo, A., Sun, D., Bhaskaran, N., Persson, A., Uhlen, M., Sangfelt, O., Spruck, C., Leibold, E. A., and Wohlschlegel, J. A. (2009) Control of iron homeostasis by an iron-regulated ubiquitin ligase. *Science* 326, 718–721.

(191) Salahudeen, A. A., Thompson, J. W., Ruiz, J. C., Ma, H. W., Kinch, L. N., Li, Q., Grishin, N. V., and Bruick, R. K. (2009) An E3 ligase possessing an iron-responsive hemerythrin domain is a regulator of iron homeostasis. *Science* 326, 722–726.

(192) Clarke, S. L., Vasanthakumar, A., Anderson, S. A., Ponderre, C., Koh, C. M., Deck, K. M., Pitula, J. S., Epstein, C. J., Fleming, M. D., and Eisenstein, R. S. (2006) Iron-responsive degradation of iron-regulatory protein 1 does not require the Fe-S cluster. *EMBO J.* 25, 544–553.

(193) Wang, J., Fillebeen, C., Chen, G., Biederbeck, A., Lill, R., and Pantopoulos, K. (2007) Iron-dependent degradation of apo-IRP1 by the ubiquitin-proteasome pathway. *Mol. Cell Biol.* 27, 2423–2430.

- (194) Smith, S. R., Ghosh, M. C., Ollivierre-Wilson, H., Hang Tong, W., and Rouault, T. A. (2006) Complete loss of iron regulatory proteins 1 and 2 prevents viability of murine zygotes beyond the blastocyst stage of embryonic development. *Blood Cells, Mol., Dis.* 36, 283–287.
- (195) Galy, B., Ferring-Appel, D., Kaden, S., Grone, H. J., and Hentze, M. W. (2008) Iron regulatory proteins are essential for intestinal function and control key iron absorption molecules in the duodenum. *Cell Metab.* 7, 79–85.
- (196) Meyron-Holtz, E. G., Ghosh, M. C., Iwai, K., LaVaute, T., Brazzolotto, X., Berger, U. V., Land, W., Ollivierre-Wilson, H., Grinberg, A., Love, P., and Rouault, T. A. (2004) Genetic ablations of iron regulatory proteins 1 and 2 reveal why iron regulatory protein 2 dominates iron homeostasis. *EMBO J.* 23, 386–395.
- (197) Cooperman, S. S., Meyron-Holtz, E. G., Ollivierre-Wilson, H., Ghosh, M. C., McConnell, J. P., and Rouault, T. A. (2005) Microcytic anemia, erythropoietic protoporphyria, and neurodegeneration in mice with targeted deletion of iron-regulatory protein 2. *Blood* 106, 1084–1091.
- (198) Galy, B., Ferring, D., Minana, B., Bell, O., Janser, H. G., Muckenthaler, M., Schumann, K., and Hentze, M. W. (2005) Altered body iron distribution and microcytosis in mice deficient in iron regulatory protein 2 (IRP2). *Blood* 106, 2580–2589.
- (199) Ferring-Appel, D., Hentze, M. W., and Galy, B. (2009) Cell-autonomous and systemic context-dependent functions of iron regulatory protein 2 in mammalian iron metabolism. *Blood* 113, 679–687.
- (200) LaVaute, T., Smith, S. R., Cooperman, S., Iwai, K., Land, W., Meyron-Holtz, E. G., Drake, S. K., Miller, G., Abu-Asab, M., Tsokos, M., Switzer, R., III, Grinberg, A., Love, P., Tresser, N., and Rouault, T. A. (2001) Targeted deletion of the gene encoding iron regulatory protein-2 causes misregulation of iron metabolism and neurodegenerative disease in mice. *Nat. Genet.* 27, 209–214.
- (201) Moroishi, T., Nishiyama, M., Takeda, Y., Iwai, K., and Nakayama, K. (2011) The FBXL5-IRP2 axis is integral to control of iron metabolism *in vivo*. *Cell Metab.* 14, 339–351.
- (202) Arosio, P., Ingrassia, R., and Cavadini, P. (2006) Ferritins: A family of molecules for iron storage, antioxidation and more. *Biochim. Biophys. Acta* 1790, 589–599.
- (203) Shi, H., Bencze, K. Z., Stemmler, T. L., and Philpott, C. C. (2009) A cytosolic iron chaperone that delivers iron to ferritin. *Science* 320, 1207–1210.
- (204) Zhang, Y., Mikhael, M., Xu, D., Li, Y., Soe-Lin, B., Li, W., Nie, G., Zhao, Y., and Ponka, P. (2010) Lysosomal proteolysis is the primary degradation pathway for cytosolic ferritin and cytosolic ferritin degradation is necessary for iron exit. *Antioxid. Redox Signaling* 13, 999–1009.
- (205) De Domenico, I., Vaughn, M. B., Li, L., Bagley, D., Musci, G., Ward, D. M., and Kaplan, J. (2006) Ferroportin-mediated mobilization of ferritin iron precedes ferritin degradation by the proteasome. *EMBO J.* 25, 5396–5404.
- (206) De Domenico, I., Ward, D. M., and Kaplan, J. (2009) Specific iron chelators determine the route of ferritin degradation. *Blood* 114, 4546–4551.
- (207) Cozzi, A., Corsi, B., Levi, S., Santambrogio, P., Biasiotto, G., and Arosio, P. (2004) Analysis of the biologic functions of H- and L-ferritins in HeLa cells by transfection with siRNAs and cDNAs: Evidence of proliferative role of L-ferritin. *Blood* 103, 2377–2383.
- (208) Epsztein, S., Glickstein, H., Picard, V., Slotki, I. N., Breuer, W., Beaumont, C., and Cabantchik, Z. I. (1999) H-Ferritin subunit overexpression in erythroid cells reduces the oxidative stress response and induces multidrug resistance properties. *Blood* 94, 3593–3603.
- (209) Levi, S., Corsi, B., Bosisio, M., Invernizzi, R., Volz, A., Sanford, D., Arosio, P., and Drysdale, J. (2001) A human mitochondrial ferritin encoded by an intronless gene. *J. Biol. Chem.* 276, 24437–24440.
- (210) Santambrogio, P., Biasiotto, G., Sanvitto, F., Olivieri, S., Arosio, P., and Levi, S. (2007) Mitochondrial ferritin expression in adult mouse tissues. *J. Histochem. Cytochem.* 55, 1129–1137.
- (211) Nie, G., Chen, G., Sheftel, A. D., Pantopoulos, K., and Ponka, P. (2006) *In vivo* tumor growth is inhibited by cytosolic iron deprivation caused by the expression of mitochondrial ferritin. *Blood* 108, 2428–2434.
- (212) Ganz, T. (2005) Cellular iron: Ferroportin is the only way out. *Cell Metab.* 1, 155–157.
- (213) De Domenico, I., Ward, D. M., and Kaplan, J. (2008) Regulation of iron acquisition and storage. Consequences for iron-linked disorders. *Nat. Rev. Mol. Cell Biol.* 9, 72–81.
- (214) Donovan, A., Lima, C. A., Pinkus, J. L., Pinkus, G. S., Zon, L. I., Robine, S., and Andrews, N. C. (2005) The iron exporter ferroportin/Slc40a1 is essential for iron homeostasis. *Cell Metab.* 1, 191–200.
- (215) Montosi, G., Donovan, A., Totaro, A., Garuti, C., Pignatti, E., Cassanelli, S., Trenor, C. C., Gasparini, P., Andrews, N. C., and Pietrangelo, A. (2002) Autosomal dominant hemochromatosis is associated with a mutation in the Ferroportin (SLC11A3) gene. *J. Clin. Invest.* 108, 619–623.
- (216) Keel, S. B., Doty, R. T., Yang, Z., Quigley, J. G., Chen, J., Knoblauch, S., Kingsley, P. D., De Domenico, I., Vaughn, M. B., Kaplan, J., Palis, J., and Abkowitz, J. L. (2008) A heme export protein is required for red blood cell differentiation and iron homeostasis. *Science* 319, 825–828.
- (217) Quigley, J. G., Yang, Z., Worthington, M. T., Phillips, J. D., Sabo, K. M., Sabath, D. E., Berg, C. L., Sassa, S., Wood, B. L., and Abkowitz, J. L. (2004) Identification of a heme exporter that is essential for erythropoiesis. *Cell* 118, 757–766.
- (218) Rajadhyaksha, A. M., Elemento, O., Puffenberger, E. G., Schierberl, K. C., Xiang, J. Z., Putorti, M. L., Berciano, J., Poulin, C., Brais, B., Michaelides, M., Weleber, R. G., and Higgins, J. J. (2002) Mutations in FLVCR1 cause posterior column ataxia and retinitis pigmentosa. *Am. J. Hum. Genet.* 87, 643–654.
- (219) Duffy, S. P., Shing, J., Saraon, P., Berger, L. C., Eiden, M. V., Wilde, A., and Taylor, C. S. (2010) The Fowler syndrome-associated protein FLVCR2 is an importer of heme. *Mol. Cell Biol.* 30, 5318–5324.
- (220) Jonker, J. W., Buitelaar, M., Wagenaar, E., van der Valk, M. A., Scheffer, G. L., Scheper, R. J., Plosch, T., Kuipers, F., Oude Elferink, R. P. J., Rosing, H., Beijnen, J. H., and Schinkel, A. H. (2002) The breast cancer resistance protein protects against a major chlorophyll-derived dietary phototoxin and protoporphyria. *Proc. Natl. Acad. Sci. U.S.A.* 99, 15649–15654.
- (221) Woodward, O. M., Kottgen, A., Coresh, J., Boerwinkle, E., Guggino, W. B., and Kottgen, M. (2009) Identification of a urate transporter, ABCG2, with a common functional polymorphism causing gout. *Proc. Natl. Acad. Sci. U.S.A.* 106, 10338–10342.